

**Tuba**

# Key Study in Ab Concert

(Ab Major Scale)

*Full Range Major Scale*

Musical notation for the Full Range Major Scale in Ab major, 4/4 time. The scale is written in the bass clef and spans from the lowest C (C2) to the highest C (C8). The notes are: C2, C3, C4, C5, C6, C7, G7, F7, E7, D7, C8.

*Stair-Step Arpeggio*

Musical notation for the Stair-Step Arpeggio in Ab major, 4/4 time. The scale is written in the bass clef and spans from the lowest C (C2) to the highest C (C8). The notes are: C2, C3, C4, C5, C6, C7, G7, F7, E7, D7, C8.

*Relative Harmonic Minor Scale*

Musical notation for the Relative Harmonic Minor Scale in Ab major, 4/4 time. The scale is written in the bass clef and spans from the lowest C (C2) to the highest C (C8). The notes are: C2, C3, C4, C5, C6, C7, G7, F7, E7, D7, C8.

*One Octave Scale in Thirds*

Musical notation for the One Octave Scale in Thirds in Ab major, 4/4 time. The scale is written in the bass clef and spans from the lowest C (C2) to the highest C (C8). The notes are: C2, C3, C4, C5, C6, C7, G7, F7, E7, D7, C8.

*Full Range Scale in Thirds*

Musical notation for the Full Range Scale in Thirds in Ab major, 4/4 time. The scale is written in the bass clef and spans from the lowest C (C2) to the highest C (C8). The notes are: C2, C3, C4, C5, C6, C7, G7, F7, E7, D7, C8.

Musical notation for the Full Range Scale in Thirds in Ab major, 4/4 time. The scale is written in the bass clef and spans from the lowest C (C2) to the highest C (C8). The notes are: C2, C3, C4, C5, C6, C7, G7, F7, E7, D7, C8.

*Clarke Study (Lower Octave)*

Musical notation for the Clarke Study (Lower Octave) in Ab major, 4/4 time. The scale is written in the bass clef and spans from the lowest C (C2) to the highest C (C8). The notes are: C2, C3, C4, C5, C6, C7, G7, F7, E7, D7, C8.

*Clarke Study (Upper Octave)*

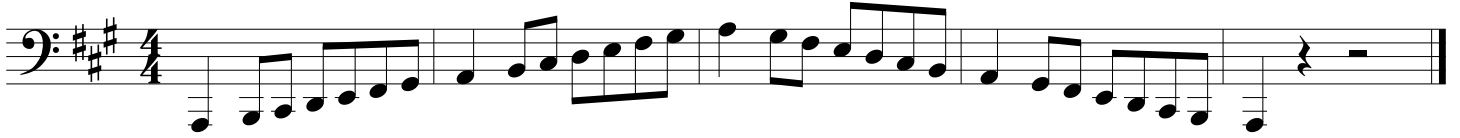
Musical notation for the Clarke Study (Upper Octave) in Ab major, 4/4 time. The scale is written in the bass clef and spans from the lowest C (C2) to the highest C (C8). The notes are: C2, C3, C4, C5, C6, C7, G7, F7, E7, D7, C8.

**Tuba**

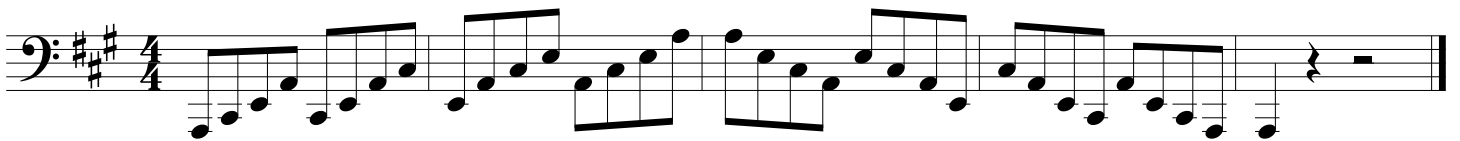
# Key Study in A Concert

(A Major Scale)

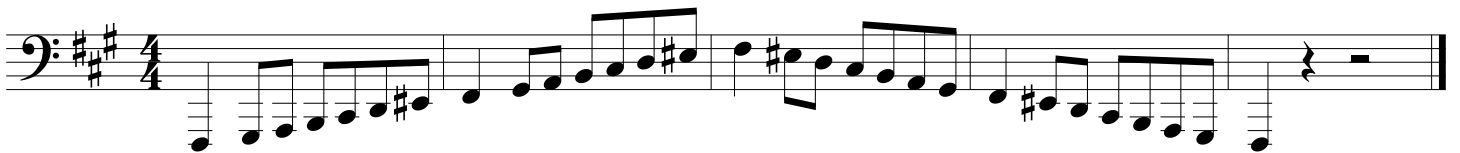
*Full Range Major Scale*



*Stair-Step Arpeggio*



*Relative Harmonic Minor Scale*



*One Octave Scale in Thirds*



*Full Range Scale in Thirds*



*Clarke Study (Lower Octave)*



*Clarke Study (Upper Octave)*



**Tuba**

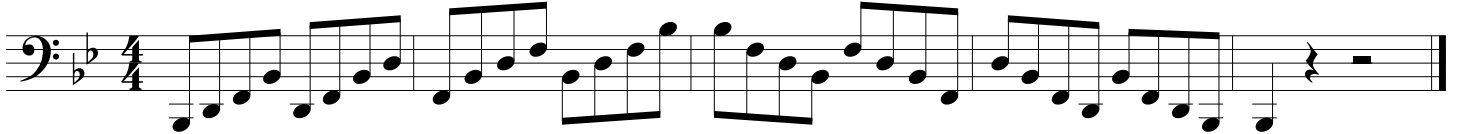
# Key Study in Bb Concert

(Bb Major Scale)

*Full Range Major Scale*



*Stair-Step Arpeggio*



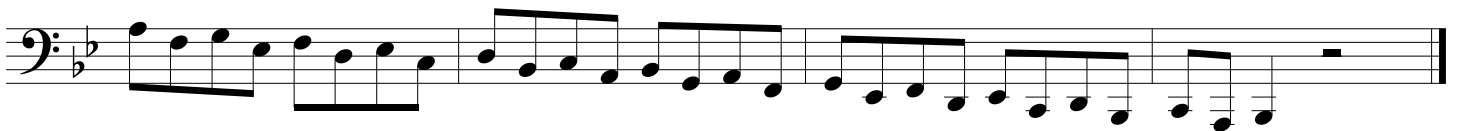
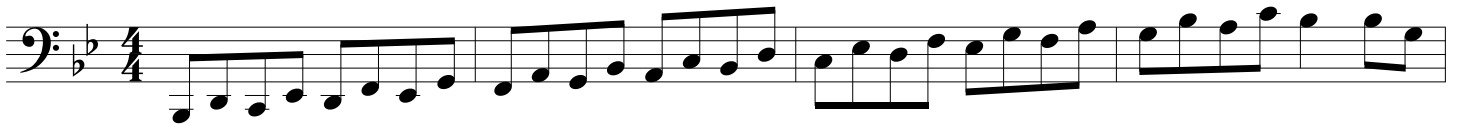
*Relative Harmonic Minor Scale*



*One Octave Scale in Thirds*



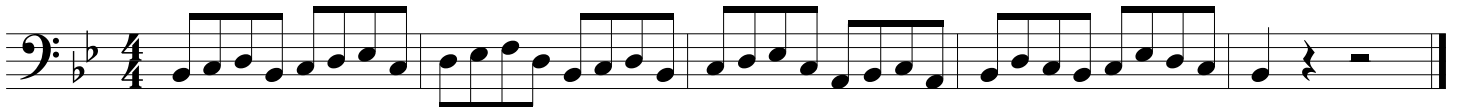
*Full Range Scale in Thirds*



*Clarke Study (Lower Octave)*



*Clarke Study (Upper Octave)*



**Tuba**

# Key Study in B Concert

(B Major Scale)

*Full Range Major Scale*

Musical notation for the Full Range Major Scale in B major, 4/4 time. The scale is written in the bass clef and spans from the lowest B to the highest B. The notes are: B2, C3, D3, E3, F#3, G#3, A3, B3, C4, D4, E4, F#4, G#4, A4, B4, C5, D5, E5, F#5, G#5, A5, B5. The piece concludes with a double bar line.

*Stair-Step Arpeggio*

Musical notation for the Stair-Step Arpeggio in B major, 4/4 time. The piece consists of a series of eighth-note arpeggios that ascend step-by-step through the B major scale, starting from B2 and ending on B5. The piece concludes with a double bar line.

*Relative Harmonic Minor Scale*

Musical notation for the Relative Harmonic Minor Scale in B major, 4/4 time. The scale is written in the bass clef and spans from the lowest B to the highest B. The notes are: B2, C3, D3, E3, F#3, G#3, A3, B3, C4, D4, E4, F#4, G#4, A4, B4, C5, D5, E5, F#5, G#5, A5, B5. The notes F#3, G#3, and F#5 are marked with an 'x' to indicate they are natural. The piece concludes with a double bar line.

*Full Range Scale in Thirds*

Musical notation for the Full Range Scale in Thirds in B major, 4/4 time. The piece consists of a series of eighth-note triplets that ascend in thirds through the B major scale, starting from B2 and ending on B5. The piece concludes with a double bar line.

*Clarke Study (Lower Octave)*

Musical notation for the Clarke Study (Lower Octave) in B major, 4/4 time. The piece consists of a series of eighth-note triplets that ascend in thirds through the B major scale, starting from B2 and ending on B5. The piece concludes with a double bar line.

*Clarke Study (Upper Octave)*

Musical notation for the Clarke Study (Upper Octave) in B major, 4/4 time. The piece consists of a series of eighth-note triplets that ascend in thirds through the B major scale, starting from B3 and ending on B6. The piece concludes with a double bar line.

**Tuba**

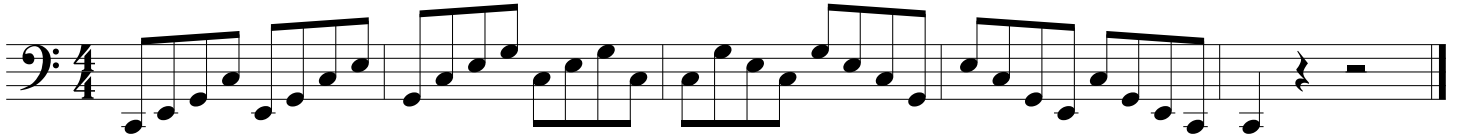
# Key Study in C Concert

(C Major Scale)

*Full Range Major Scale*



*Stair-Step Arpeggio*



*Relative Harmonic Minor Scale*



*Full Range Scale in Thirds*



*Clarke Study (Lower Octave)*



*Clarke Study (Upper Octave)*



**Tuba**

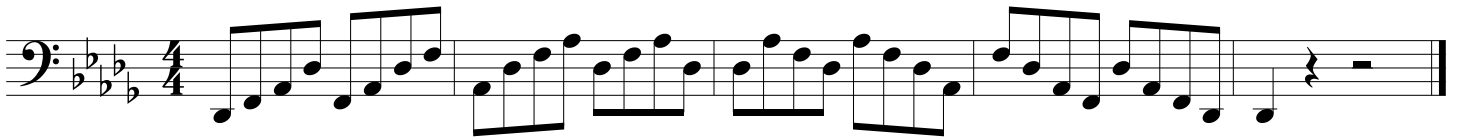
# Key Study in Db Concert

(Db Major Scale)

*Full Range Major Scale*



*Stair-Step Arpeggio*



*Relative Harmonic Minor Scale*



*Full Range Scale in Thirds*



*Clarke Study (Lower Octave)*



*Clarke Study (Upper Octave)*



**Tuba**

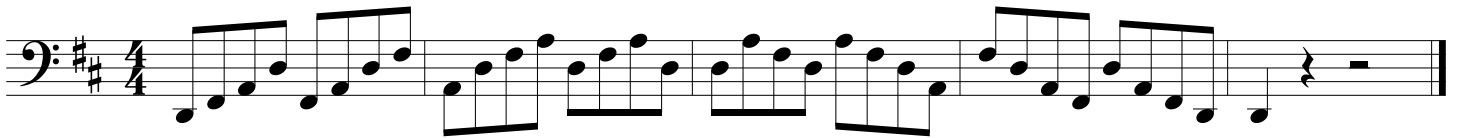
# Key Study in D Concert

(D Major Scale)

*Full Range Major Scale*



*Stair-Step Arpeggio*



*Relative Harmonic Minor Scale*



*Full Range Scale in Thirds*



*Clarke Study (Lower Octave)*



*Clarke Study (Upper Octave)*



**Tuba**

# Key Study in Eb Concert

(Eb Major Scale)

*Full Range Major Scale*



*Stair-Step Arpeggio*



*Relative Harmonic Minor Scale*



*Full Range Scale in Thirds*



*Clarke Study (Lower Octave)*



*Clarke Study (Upper Octave)*





**Tuba**

# Key Study in E Concert

(E Major Scale)

*Full Range Major Scale*

Musical notation for the Full Range Major Scale in E major, 4/4 time. The scale is written in the bass clef and spans from E2 to E5. It consists of 14 measures: 7 measures of ascending eighth notes, 7 measures of descending eighth notes, and a final measure with a whole rest.

*Stair-Step Arpeggio*

Musical notation for the Stair-Step Arpeggio in E major, 4/4 time. The arpeggio is written in the bass clef and spans from E2 to E5. It consists of 14 measures: 7 measures of ascending eighth notes, 7 measures of descending eighth notes, and a final measure with a whole rest.

*Relative Harmonic Minor Scale*

Musical notation for the Relative Harmonic Minor Scale in E major, 4/4 time. The scale is written in the bass clef and spans from E2 to E5. It consists of 14 measures: 7 measures of ascending eighth notes, 7 measures of descending eighth notes, and a final measure with a whole rest.

*One Octave Scale in Thirds*

Musical notation for the One Octave Scale in Thirds in E major, 4/4 time. The scale is written in the bass clef and spans from E2 to E5. It consists of 14 measures: 7 measures of ascending eighth notes, 7 measures of descending eighth notes, and a final measure with a whole rest.

*Clarke Study (Lower Octave)*

Musical notation for the Clarke Study (Lower Octave) in E major, 4/4 time. The study is written in the bass clef and spans from E2 to E5. It consists of 14 measures: 7 measures of ascending eighth notes, 7 measures of descending eighth notes, and a final measure with a whole rest.

*Clarke Study (Upper Octave)*

Musical notation for the Clarke Study (Upper Octave) in E major, 4/4 time. The study is written in the bass clef and spans from E3 to E6. It consists of 14 measures: 7 measures of ascending eighth notes, 7 measures of descending eighth notes, and a final measure with a whole rest.

**Tuba**

# Key Study in F Concert

(F Major Scale)

*Full Range Major Scale*

Musical notation for the Full Range Major Scale in F major, 4/4 time. The scale is written in the bass clef and spans from the lowest F to the highest F. The notation includes a key signature of one flat (Bb) and a time signature of 4/4. The scale is played in a single octave, starting on F2 and ending on F3.

*Stair-Step Arpeggio*

Musical notation for the Stair-Step Arpeggio in F major, 4/4 time. The arpeggio is written in the bass clef and spans from the lowest F to the highest F. The notation includes a key signature of one flat (Bb) and a time signature of 4/4. The arpeggio is played in a single octave, starting on F2 and ending on F3.

*Relative Harmonic Minor Scale*

Musical notation for the Relative Harmonic Minor Scale in F major, 4/4 time. The scale is written in the bass clef and spans from the lowest F to the highest F. The notation includes a key signature of one flat (Bb) and a time signature of 4/4. The scale is played in a single octave, starting on F2 and ending on F3.

*One Octave Scale in Thirds*

Musical notation for the One Octave Scale in Thirds in F major, 4/4 time. The scale is written in the bass clef and spans from the lowest F to the highest F. The notation includes a key signature of one flat (Bb) and a time signature of 4/4. The scale is played in a single octave, starting on F2 and ending on F3.

*Full Range Scale in Thirds*

Musical notation for the Full Range Scale in Thirds in F major, 4/4 time. The scale is written in the bass clef and spans from the lowest F to the highest F. The notation includes a key signature of one flat (Bb) and a time signature of 4/4. The scale is played in a single octave, starting on F2 and ending on F3.

Musical notation for the Full Range Scale in Thirds in F major, 4/4 time. The scale is written in the bass clef and spans from the lowest F to the highest F. The notation includes a key signature of one flat (Bb) and a time signature of 4/4. The scale is played in a single octave, starting on F2 and ending on F3.

*Clarke Study (Lower Octave)*

Musical notation for the Clarke Study (Lower Octave) in F major, 4/4 time. The study is written in the bass clef and spans from the lowest F to the highest F. The notation includes a key signature of one flat (Bb) and a time signature of 4/4. The study is played in a single octave, starting on F2 and ending on F3.

*Clarke Study (Upper Octave)*

Musical notation for the Clarke Study (Upper Octave) in F major, 4/4 time. The study is written in the bass clef and spans from the lowest F to the highest F. The notation includes a key signature of one flat (Bb) and a time signature of 4/4. The study is played in a single octave, starting on F2 and ending on F3.

**Tuba**

# Key Study in F# Concert

(F# Major Scale)

*Full Range Major Scale*

Musical notation for the Full Range Major Scale in F# major, 4/4 time. The scale is written in the bass clef and spans from the lowest note to the highest note of the instrument's range.

*Stair-Step Arpeggio*

Musical notation for the Stair-Step Arpeggio in F# major, 4/4 time. The exercise consists of a series of eighth-note chords moving up and down the scale in a step-wise fashion.

*Relative Harmonic Minor Scale*

Musical notation for the Relative Harmonic Minor Scale in F# major, 4/4 time. The scale is written in the bass clef and includes natural signs for the 6th and 7th degrees of the scale.

*One Octave Scale in Thirds*

Musical notation for the One Octave Scale in Thirds in F# major, 4/4 time. The exercise consists of a series of eighth-note chords moving up and down the scale in a step-wise fashion.

*Full Range Scale in Thirds*

Musical notation for the Full Range Scale in Thirds in F# major, 4/4 time. The exercise consists of a series of eighth-note chords moving up and down the scale in a step-wise fashion.

*Clarke Study (Lower Octave)*

Musical notation for the Clarke Study (Lower Octave) in F# major, 4/4 time. The exercise consists of a series of eighth-note chords moving up and down the scale in a step-wise fashion.

*Clarke Study (Upper Octave)*

Musical notation for the Clarke Study (Upper Octave) in F# major, 4/4 time. The exercise consists of a series of eighth-note chords moving up and down the scale in a step-wise fashion.

**Tuba**

# Key Study in Gb Concert

(Gb Major Scale)

*Full Range Major Scale*

Musical notation for the Full Range Major Scale in Gb major, 4/4 time. The scale is written in the bass clef and spans two octaves, starting on Gb and ending on Gb. The notation includes a key signature of two flats (Bb and Eb) and a 4/4 time signature.

*Stair-Step Arpeggio*

Musical notation for the Stair-Step Arpeggio in Gb major, 4/4 time. The exercise is written in the bass clef and spans two octaves, starting on Gb and ending on Gb. The notation includes a key signature of two flats (Bb and Eb) and a 4/4 time signature.

*Relative Harmonic Minor Scale*

Musical notation for the Relative Harmonic Minor Scale in Gb major, 4/4 time. The scale is written in the bass clef and spans two octaves, starting on Gb and ending on Gb. The notation includes a key signature of two flats (Bb and Eb) and a 4/4 time signature.

*One Octave Scale in Thirds*

Musical notation for the One Octave Scale in Thirds in Gb major, 4/4 time. The exercise is written in the bass clef and spans one octave, starting on Gb and ending on Gb. The notation includes a key signature of two flats (Bb and Eb) and a 4/4 time signature.

*Full Range Scale in Thirds*

Musical notation for the Full Range Scale in Thirds in Gb major, 4/4 time. The exercise is written in the bass clef and spans two octaves, starting on Gb and ending on Gb. The notation includes a key signature of two flats (Bb and Eb) and a 4/4 time signature.

Musical notation for the Full Range Scale in Thirds in Gb major, 4/4 time. The exercise is written in the bass clef and spans two octaves, starting on Gb and ending on Gb. The notation includes a key signature of two flats (Bb and Eb) and a 4/4 time signature.

*Clarke Study (Lower Octave)*

Musical notation for the Clarke Study (Lower Octave) in Gb major, 4/4 time. The exercise is written in the bass clef and spans two octaves, starting on Gb and ending on Gb. The notation includes a key signature of two flats (Bb and Eb) and a 4/4 time signature.

*Clarke Study (Upper Octave)*

Musical notation for the Clarke Study (Upper Octave) in Gb major, 4/4 time. The exercise is written in the bass clef and spans two octaves, starting on Gb and ending on Gb. The notation includes a key signature of two flats (Bb and Eb) and a 4/4 time signature.

**Tuba**

# Key Study in G Concert

(G Major Scale)

*Full Range Major Scale*

Musical notation for the Full Range Major Scale in G major, 4/4 time. The scale is written in bass clef and spans two octaves, starting on G2 and ending on G4. The notes are: G2, A2, B2, C3, D3, E3, F#3, G3, A3, B3, C4, D4, E4, F#4, G4.

*Stair-Step Arpeggio*

Musical notation for the Stair-Step Arpeggio in G major, 4/4 time. The scale is written in bass clef and spans two octaves, starting on G2 and ending on G4. The notes are: G2, A2, B2, C3, D3, E3, F#3, G3, A3, B3, C4, D4, E4, F#4, G4.

*Relative Harmonic Minor Scale*

Musical notation for the Relative Harmonic Minor Scale in G major, 4/4 time. The scale is written in bass clef and spans two octaves, starting on G2 and ending on G4. The notes are: G2, A2, B2, C3, D3, E3, F#3, G3, A3, B3, C4, D4, E4, F#4, G4.

*One Octave Scale in Thirds*

Musical notation for the One Octave Scale in Thirds in G major, 4/4 time. The scale is written in bass clef and spans one octave, starting on G2 and ending on G3. The notes are: G2, B2, D3, F#3, A3, C4, E4, G4.

*Full Range Scale in Thirds*

Musical notation for the Full Range Scale in Thirds in G major, 4/4 time. The scale is written in bass clef and spans two octaves, starting on G2 and ending on G4. The notes are: G2, B2, D3, F#3, A3, C4, E4, G4.

*Clarke Study (Lower Octave)*

Musical notation for the Clarke Study (Lower Octave) in G major, 4/4 time. The scale is written in bass clef and spans one octave, starting on G2 and ending on G3. The notes are: G2, B2, D3, F#3, A3, C4, E4, G4.

*Clarke Study (Upper Octave)*

Musical notation for the Clarke Study (Upper Octave) in G major, 4/4 time. The scale is written in bass clef and spans one octave, starting on G3 and ending on G4. The notes are: G3, B3, D4, F#4, A4, C5, E5, G5.