

Trumpet

Key Study in Gb Concert

(Ab Major Scale)

Full Range Major Scale

Musical notation for the Full Range Major Scale in Gb Concert (Ab Major Scale), 4/4 time. The scale is written in treble clef with a key signature of three flats (Bb, Eb, Ab). The melody starts on Gb and ascends stepwise through the scale, then descends stepwise back to Gb, ending with a whole rest.

Stair-Step Arpeggio

Musical notation for the Stair-Step Arpeggio in Gb Concert (Ab Major Scale), 4/4 time. The melody starts on Gb and ascends stepwise through the scale, then descends stepwise back to Gb, ending with a whole rest.

Relative Harmonic Minor Scale

Musical notation for the Relative Harmonic Minor Scale in Gb Concert (Ab Major Scale), 4/4 time. The scale is written in treble clef with a key signature of three flats (Bb, Eb, Ab). The melody starts on Gb and ascends stepwise through the scale, then descends stepwise back to Gb, ending with a whole rest.

One Octave Scale in Thirds

Musical notation for the One Octave Scale in Thirds in Gb Concert (Ab Major Scale), 4/4 time. The melody starts on Gb and ascends stepwise through the scale, then descends stepwise back to Gb, ending with a whole rest.

Full Range Scale in Thirds

Musical notation for the Full Range Scale in Thirds in Gb Concert (Ab Major Scale), 4/4 time. The melody starts on Gb and ascends stepwise through the scale, then descends stepwise back to Gb, ending with a whole rest.

Musical notation for the Full Range Scale in Thirds in Gb Concert (Ab Major Scale), 4/4 time. The melody starts on Gb and ascends stepwise through the scale, then descends stepwise back to Gb, ending with a whole rest.

Clarke Study (Lower Octave)

Musical notation for the Clarke Study (Lower Octave) in Gb Concert (Ab Major Scale), 4/4 time. The melody starts on Gb and ascends stepwise through the scale, then descends stepwise back to Gb, ending with a whole rest.

Clarke Study (Upper Octave)

Musical notation for the Clarke Study (Upper Octave) in Gb Concert (Ab Major Scale), 4/4 time. The melody starts on Gb and ascends stepwise through the scale, then descends stepwise back to Gb, ending with a whole rest.

Trumpet

Key Study in G Concert

(A Major Scale)

Full Range Major Scale

Musical notation for the Full Range Major Scale in G major, 4/4 time. The scale is written on a single staff, starting on G4 and ascending to G5, then descending back to G4. The notes are G, A, B, C, D, E, F#, G, F#, E, D, C, B, A, G.

Stair-Step Arpeggio

Musical notation for the Stair-Step Arpeggio in G major, 4/4 time. The exercise consists of a series of eighth-note arpeggios that ascend and then descend, covering the full range of the scale.

Relative Harmonic Minor Scale

Musical notation for the Relative Harmonic Minor Scale in G major, 4/4 time. The scale is written on a single staff, starting on G4 and ascending to G5, then descending back to G4. The notes are G, A, B, C, D, E, F#, G, F#, E, D, C, B, A, G.

One Octave Scale in Thirds

Musical notation for the One Octave Scale in Thirds in G major, 4/4 time. The exercise consists of a series of eighth-note pairs that ascend and then descend, covering one octave of the scale.

Full Range Scale in Thirds

Musical notation for the Full Range Scale in Thirds in G major, 4/4 time. The exercise consists of a series of eighth-note pairs that ascend and then descend, covering the full range of the scale.

Musical notation for the Full Range Scale in Thirds in G major, 4/4 time. The exercise consists of a series of eighth-note pairs that ascend and then descend, covering the full range of the scale.

Clarke Study (Lower Octave)

Musical notation for the Clarke Study (Lower Octave) in G major, 4/4 time. The exercise consists of a series of eighth-note pairs that ascend and then descend, covering the lower octave of the scale.

Clarke Study (Upper Octave)

Musical notation for the Clarke Study (Upper Octave) in G major, 4/4 time. The exercise consists of a series of eighth-note pairs that ascend and then descend, covering the upper octave of the scale.

Trumpet

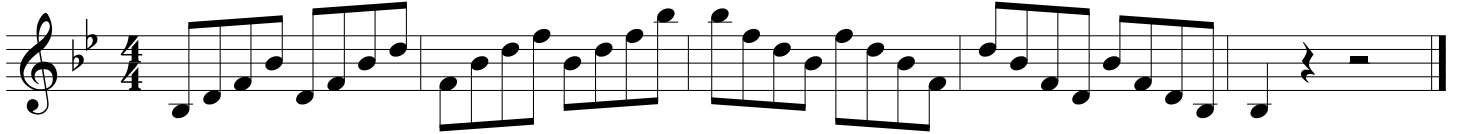
Key Study in Ab Concert

(Bb Major Scale)

Full Range Major Scale



Stair-Step Arpeggio



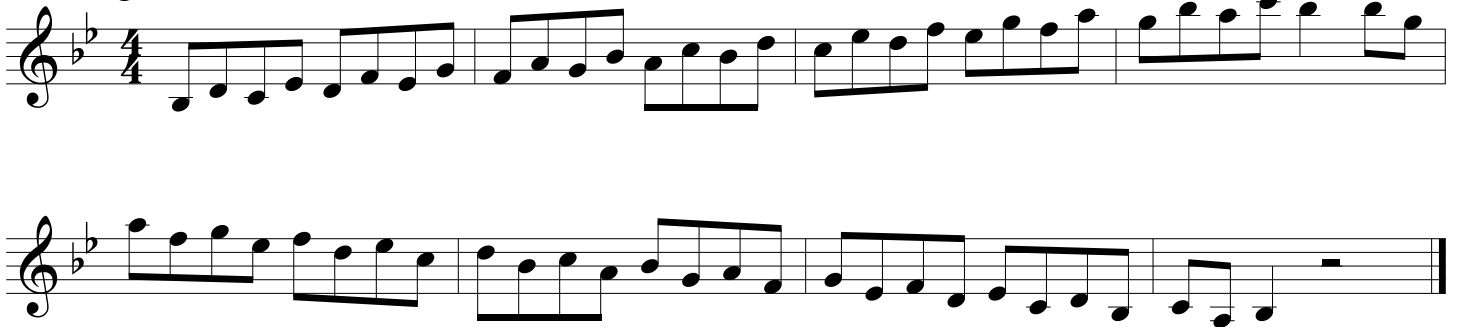
Relative Harmonic Minor Scale



One Octave Scale in Thirds



Full Range Scale in Thirds



Clarke Study (Lower Octave)



Clarke Study (Upper Octave)



Trumpet

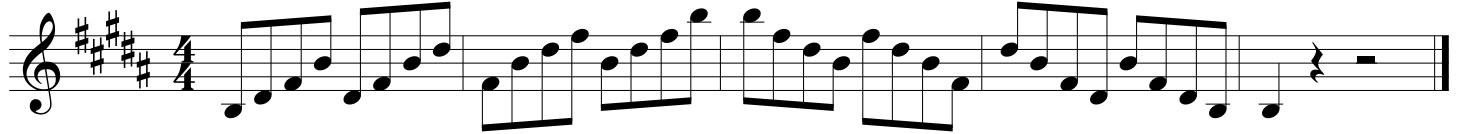
Key Study in A Concert

(B Major Scale)

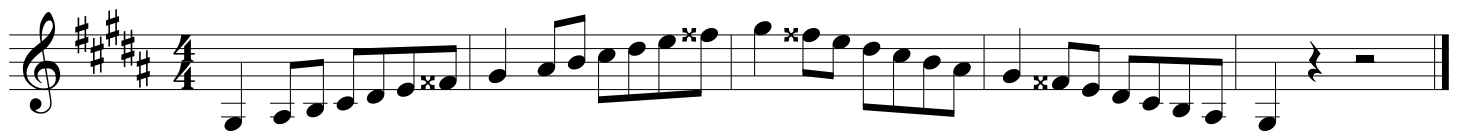
Full Range Major Scale



Stair-Step Arpeggio



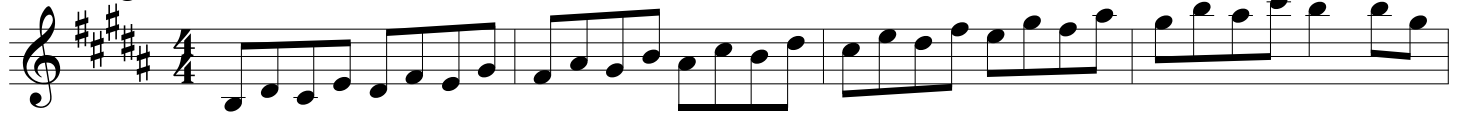
Relative Harmonic Minor Scale



One Octave Scale in Thirds



Full Range Scale in Thirds



Clarke Study (Lower Octave)



Clarke Study (Upper Octave)



Trumpet

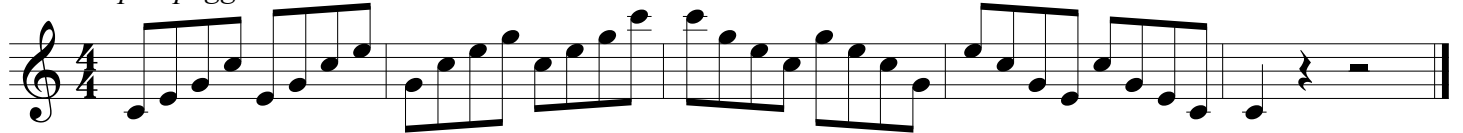
Key Study in Bb Concert

(C Major Scale)

Full Range Major Scale



Stair-Step Arpeggio



Relative Harmonic Minor Scale



One Octave Scale in Thirds



Full Range Scale in Thirds



Clarke Study (Lower Octave)



Clarke Study (Upper Octave)



Trumpet

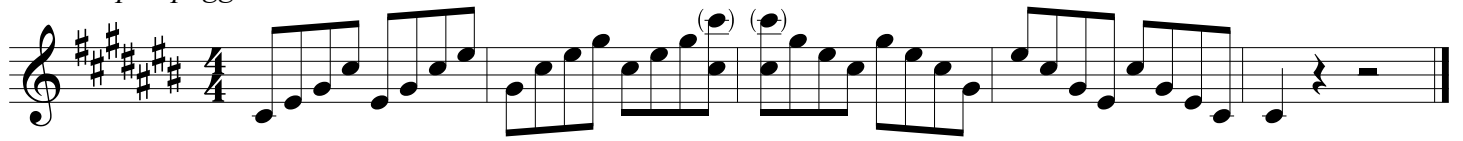
Key Study in B Concert

(C# Major Scale)

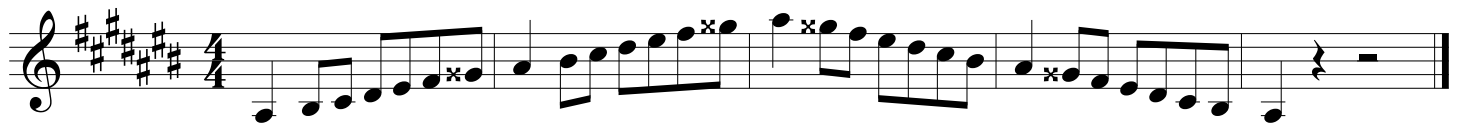
Full Range Major Scale



Stair-Step Arpeggio



Relative Harmonic Minor Scale



Full Range Scale in Thirds



Clarke Study (Lower Octave)



Clarke Study (Upper Octave)



Trumpet

Key Study in Cb Concert

(Db Major Scale)

Full Range Major Scale

Musical notation for the Full Range Major Scale in Cb Concert (Db Major Scale), 4/4 time. The scale is written in treble clef with a key signature of three flats (Cb, Bb, Ab). The notation shows the ascending and descending scales across the full range of the instrument, ending with a double bar line.

Stair-Step Arpeggio

Musical notation for the Stair-Step Arpeggio in Cb Concert (Db Major Scale), 4/4 time. The notation shows the ascending and descending arpeggios in a stair-step pattern across the full range of the instrument. The final two notes of the descending scale are marked with a fermata (f) above them. The piece ends with a double bar line.

Relative Harmonic Minor Scale

Musical notation for the Relative Harmonic Minor Scale in Cb Concert (Db Major Scale), 4/4 time. The notation shows the ascending and descending scales across the full range of the instrument, with the natural 7th degree (Ab) raised to a natural 7th (A) in the descending scale. The piece ends with a double bar line.

Full Range Scale in Thirds

Musical notation for the Full Range Scale in Thirds in Cb Concert (Db Major Scale), 4/4 time. The notation shows the ascending and descending scales across the full range of the instrument, with intervals of a third. The piece ends with a double bar line.

Clarke Study (Lower Octave)

Musical notation for the Clarke Study (Lower Octave) in Cb Concert (Db Major Scale), 4/4 time. The notation shows the ascending and descending scales across the lower range of the instrument, with eighth-note patterns. The piece ends with a double bar line.

Clarke Study (Upper Octave)

Musical notation for the Clarke Study (Upper Octave) in Cb Concert (Db Major Scale), 4/4 time. The notation shows the ascending and descending scales across the upper range of the instrument, with eighth-note patterns. The piece ends with a double bar line.

Trumpet

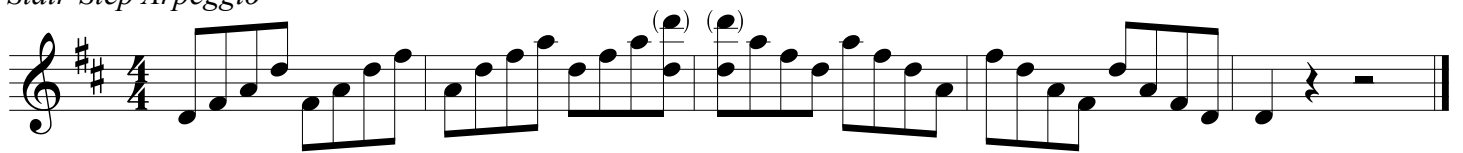
Key Study in C Concert

(D Major Scale)

Full Range Major Scale



Stair-Step Arpeggio



Relative Harmonic Minor Scale



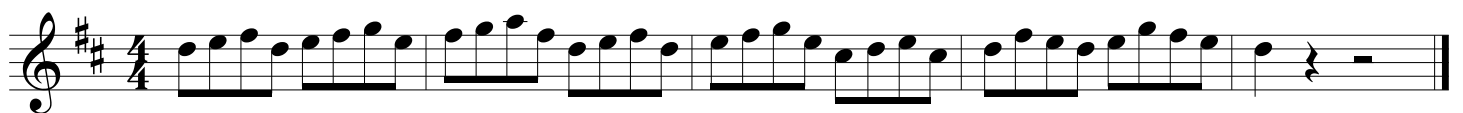
Full Range Scale in Thirds



Clarke Study (Lower Octave)



Clarke Study (Upper Octave)

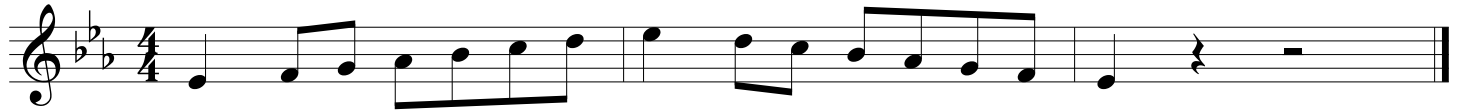


Trumpet

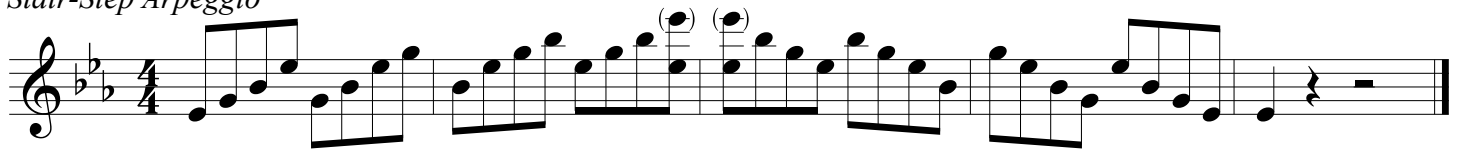
Key Study in Db Concert

(Eb Major Scale)

Full Range Major Scale



Stair-Step Arpeggio



Relative Harmonic Minor Scale



Full Range Scale in Thirds



Clarke Study (Lower Octave)



Clarke Study (Upper Octave)

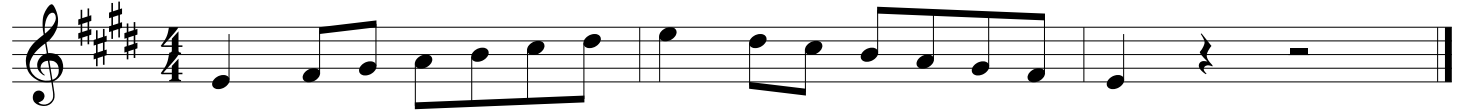


Trumpet

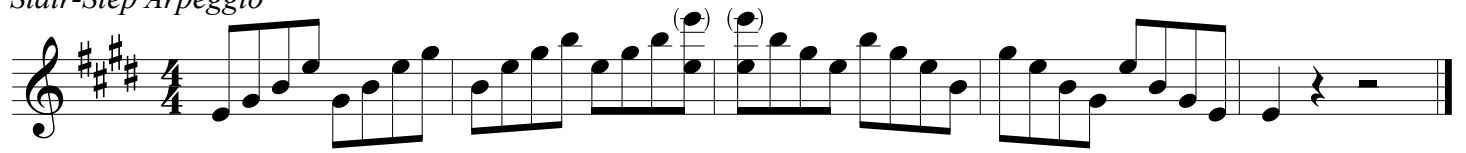
Key Study in D Concert

(E Major Scale)

Full Range Major Scale



Stair-Step Arpeggio



Relative Harmonic Minor Scale



Full Range Scale in Thirds



Clarke Study (Lower Octave)



Clarke Study (Upper Octave)



Trumpet

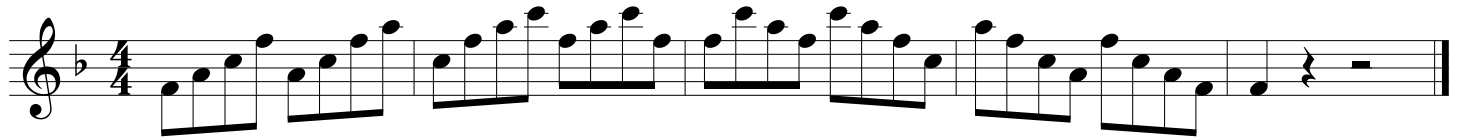
Key Study in Eb Concert

(F Major Scale)

Full Range Major Scale



Stair-Step Arpeggio



Relative Harmonic Minor Scale



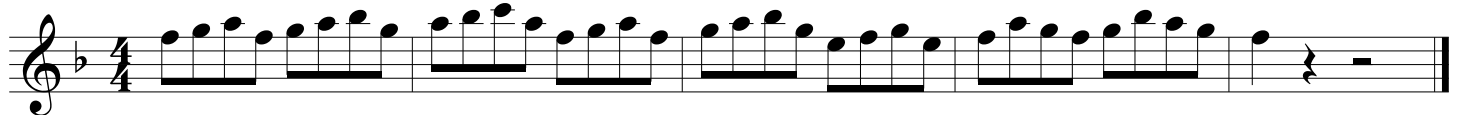
Full Range Scale in Thirds



Clarke Study (Lower Octave)



Clarke Study (Upper Octave)

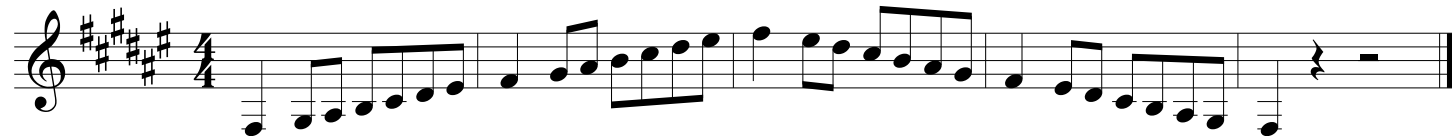


Trumpet

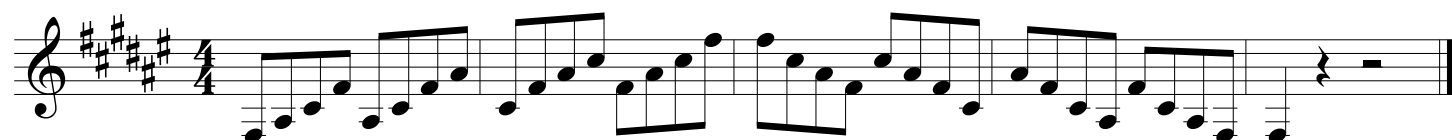
Key Study in E Concert

(F# Major Scale)

Full Range Major Scale



Stair-Step Arpeggio



Relative Harmonic Minor Scale



One Octave Scale in Thirds



Clarke Study (Lower Octave)



Clarke Study (Upper Octave)



Trumpet

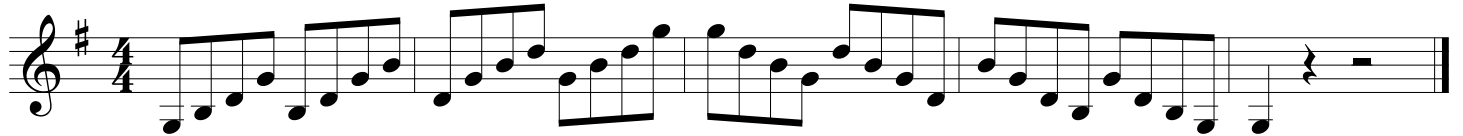
Key Study in F Concert

(G Major Scale)

Full Range Major Scale



Stair-Step Arpeggio



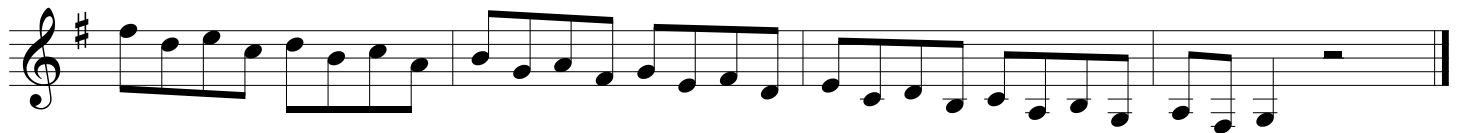
Relative Harmonic Minor Scale



One Octave Scale in Thirds



Full Range Scale in Thirds



Clarke Study (Lower Octave)



Clarke Study (Upper Octave)

