

Bassoon

Key Study in Ab Concert

(Ab Major Scale)

Full Range Major Scale

Musical notation for the Full Range Major Scale in Ab major, 4/4 time. The scale is written in the bass clef and spans from G2 to G4. It consists of a single melodic line with a final whole note G4.

Stair-Step Arpeggio

Musical notation for the Stair-Step Arpeggio in Ab major, 4/4 time. The exercise is written in the bass clef and spans from G2 to G4. It features a series of eighth-note arpeggios that ascend and then descend, with a final whole note G4.

Relative Harmonic Minor Scale

Musical notation for the Relative Harmonic Minor Scale in Ab major, 4/4 time. The scale is written in the bass clef and spans from G2 to G4. It consists of a single melodic line with a final whole note G4.

One Octave Scale in Thirds

Musical notation for the One Octave Scale in Thirds in Ab major, 4/4 time. The exercise is written in the bass clef and spans from G2 to G4. It consists of a single melodic line with a final whole note G4.

Full Range Scale in Thirds

Musical notation for the Full Range Scale in Thirds in Ab major, 4/4 time. The exercise is written in the bass clef and spans from G2 to G4. It consists of a single melodic line with a final whole note G4.

Musical notation for the Full Range Scale in Thirds in Ab major, 4/4 time. The exercise is written in the bass clef and spans from G2 to G4. It consists of a single melodic line with a final whole note G4.

Clarke Study (Lower Octave)

Musical notation for the Clarke Study (Lower Octave) in Ab major, 4/4 time. The exercise is written in the bass clef and spans from G2 to G4. It consists of a single melodic line with a final whole note G4.

Clarke Study (Upper Octave)

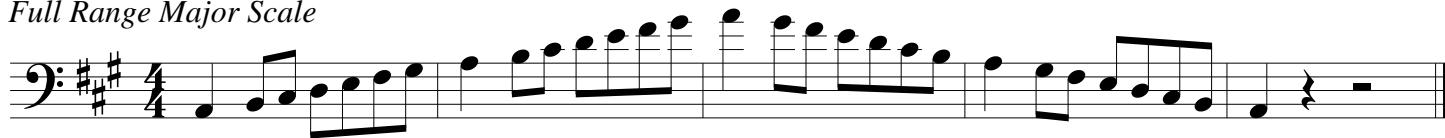
Musical notation for the Clarke Study (Upper Octave) in Ab major, 4/4 time. The exercise is written in the bass clef and spans from G2 to G4. It consists of a single melodic line with a final whole note G4.

Bassoon

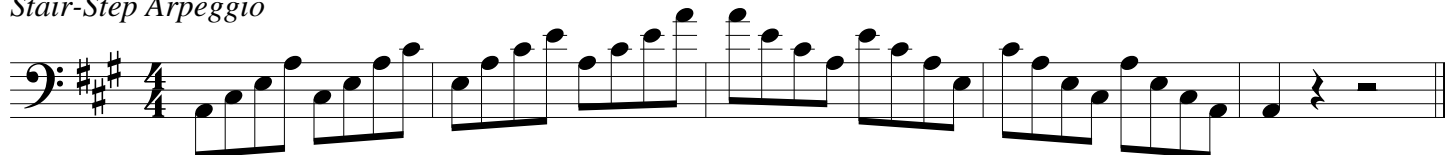
Key Study in A Concert

(A Major Scale)

Full Range Major Scale



Stair-Step Arpeggio



Relative Harmonic Minor Scale



Full Range Scale in Thirds



Clarke Study (Lower Octave)



Clarke Study (Upper Octave)



Bassoon

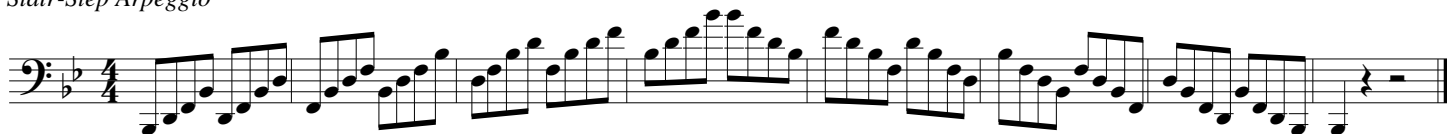
Key Study in Bb Concert

(Bb Major Scale)

Full Range Major Scale



Stair-Step Arpeggio



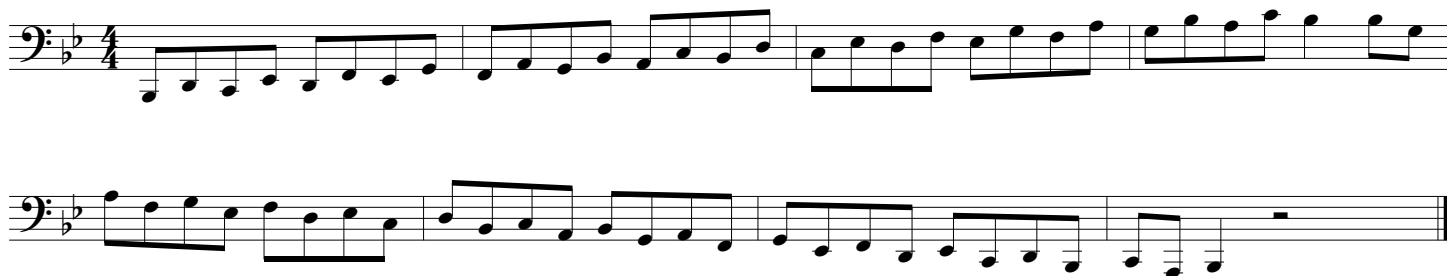
Relative Harmonic Minor Scale



One Octave Scale in Thirds



Full Range Scale in Thirds



Clarke Study (Lower Octave)



Clarke Study (Upper Octave)



Bassoon

Key Study in B Concert

(B Major Scale)

Full Range Major Scale

Musical notation for the Full Range Major Scale in B major, 4/4 time. The scale is written in the bass clef and spans two octaves, starting on B1 and ending on B3. The notes are: B1, C2, D2, E2, F2, G2, A2, B2, C3, D3, E3, F3, G3, A3, B3.

Stair-Step Arpeggio

Musical notation for the Stair-Step Arpeggio in B major, 4/4 time. The exercise consists of ascending and descending arpeggios in a stair-step pattern across two octaves, starting on B1 and ending on B3.

Relative Harmonic Minor Scale

Musical notation for the Relative Harmonic Minor Scale in B major, 4/4 time. The scale is written in the bass clef and spans two octaves, starting on B1 and ending on B3. The notes are: B1, C2, D2, E2, F2, G2, A2, B2, C3, D3, E3, F3, G3, A3, B3. The notes F2, G2, and A2 are marked with an asterisk (*).

One Octave Scale in Thirds

Musical notation for the One Octave Scale in Thirds in B major, 4/4 time. The exercise consists of ascending and descending scales in thirds across one octave, starting on B2 and ending on B3.

Full Range Scale in Thirds

Musical notation for the Full Range Scale in Thirds in B major, 4/4 time. The exercise consists of ascending and descending scales in thirds across two octaves, starting on B1 and ending on B3.

Musical notation for the Full Range Scale in Thirds in B major, 4/4 time. The exercise consists of ascending and descending scales in thirds across two octaves, starting on B1 and ending on B3.

Clarke Study (Lower Octave)

Musical notation for the Clarke Study (Lower Octave) in B major, 4/4 time. The exercise consists of ascending and descending scales in thirds across one octave, starting on B2 and ending on B3.

Clarke Study (Upper Octave)

Musical notation for the Clarke Study (Upper Octave) in B major, 4/4 time. The exercise consists of ascending and descending scales in thirds across one octave, starting on B3 and ending on B4.

Bassoon

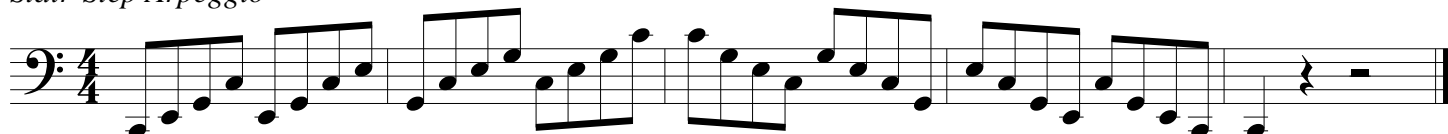
Key Study in C Concert

(C Major Scale)

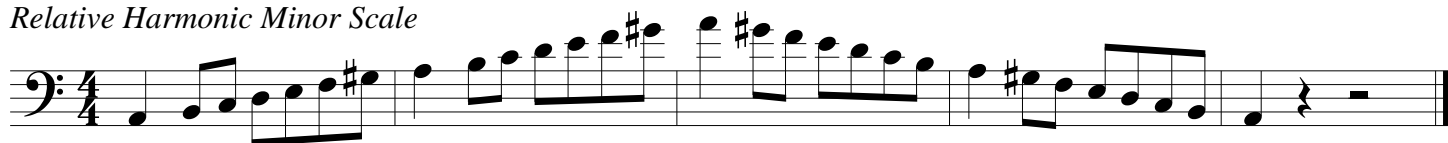
Full Range Major Scale



Stair-Step Arpeggio



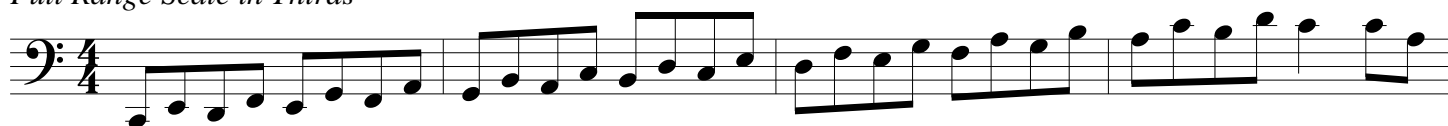
Relative Harmonic Minor Scale



One Octave Scale in Thirds



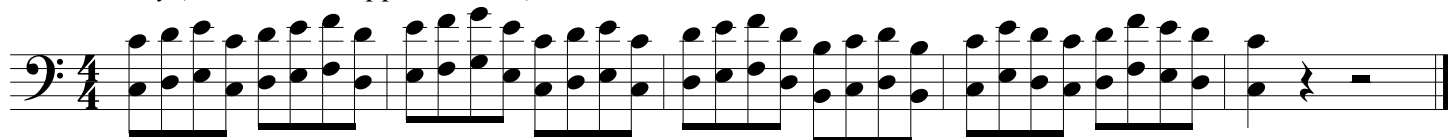
Full Range Scale in Thirds



Clarke Study (Lower Octave)



Clarke Study (Middle and Upper Octave)



Bassoon

Key Study in C# Concert

(C# Major Scale)

Full Range Major Scale

Musical notation for the Full Range Major Scale in C# major, 4/4 time. The scale is written in the bass clef and spans from C2 to C4. The notes are: C2, C#2, D2, D#2, E2, E#2, F#2, G#2, A2, A#2, B2, C3, C#3, D3, D#3, E3, E#3, F#3, G#3, A3, A#3, B3, C4.

Stair-Step Arpeggio

Musical notation for the Stair-Step Arpeggio in C# major, 4/4 time. The scale is written in the bass clef and spans from C2 to C4. The notes are: C2, C#2, D2, D#2, E2, E#2, F#2, G#2, A2, A#2, B2, C3, C#3, D3, D#3, E3, E#3, F#3, G#3, A3, A#3, B3, C4.

Relative Harmonic Minor Scale

Musical notation for the Relative Harmonic Minor Scale in C# major, 4/4 time. The scale is written in the bass clef and spans from C2 to C4. The notes are: C2, C#2, D2, D#2, E2, E#2, F#2, G#2, A2, A#2, B2, C3, C#3, D3, D#3, E3, E#3, F#3, G#3, A3, A#3, B3, C4.

One Octave Scale in Thirds

Musical notation for the One Octave Scale in Thirds in C# major, 4/4 time. The scale is written in the bass clef and spans from C2 to C4. The notes are: C2, C#2, D2, D#2, E2, E#2, F#2, G#2, A2, A#2, B2, C3, C#3, D3, D#3, E3, E#3, F#3, G#3, A3, A#3, B3, C4.

Full Range Scale in Thirds

Musical notation for the Full Range Scale in Thirds in C# major, 4/4 time. The scale is written in the bass clef and spans from C2 to C4. The notes are: C2, C#2, D2, D#2, E2, E#2, F#2, G#2, A2, A#2, B2, C3, C#3, D3, D#3, E3, E#3, F#3, G#3, A3, A#3, B3, C4.

Musical notation for the Full Range Scale in Thirds in C# major, 4/4 time. The scale is written in the bass clef and spans from C2 to C4. The notes are: C2, C#2, D2, D#2, E2, E#2, F#2, G#2, A2, A#2, B2, C3, C#3, D3, D#3, E3, E#3, F#3, G#3, A3, A#3, B3, C4.

Clarke Study (Lower Octave)

Musical notation for the Clarke Study (Lower Octave) in C# major, 4/4 time. The scale is written in the bass clef and spans from C2 to C4. The notes are: C2, C#2, D2, D#2, E2, E#2, F#2, G#2, A2, A#2, B2, C3, C#3, D3, D#3, E3, E#3, F#3, G#3, A3, A#3, B3, C4.

Clarke Study (Middle and Upper Octave)

Musical notation for the Clarke Study (Middle and Upper Octave) in C# major, 4/4 time. The scale is written in the bass clef and spans from C2 to C4. The notes are: C2, C#2, D2, D#2, E2, E#2, F#2, G#2, A2, A#2, B2, C3, C#3, D3, D#3, E3, E#3, F#3, G#3, A3, A#3, B3, C4.

Bassoon

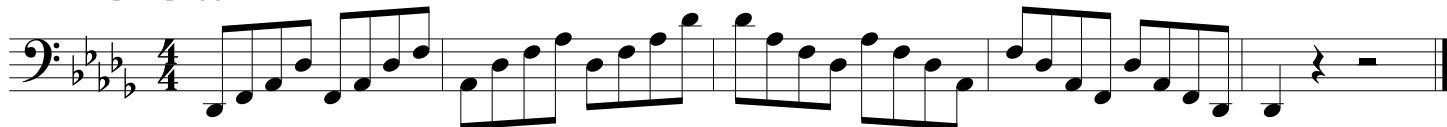
Key Study in Db Concert

(Db Major Scale)

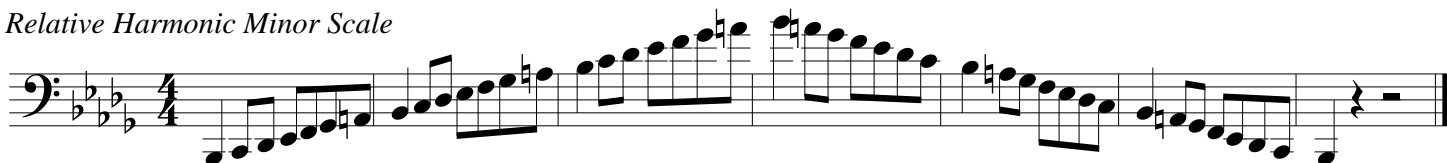
Full Range Major Scale



Stair-Step Arpeggio



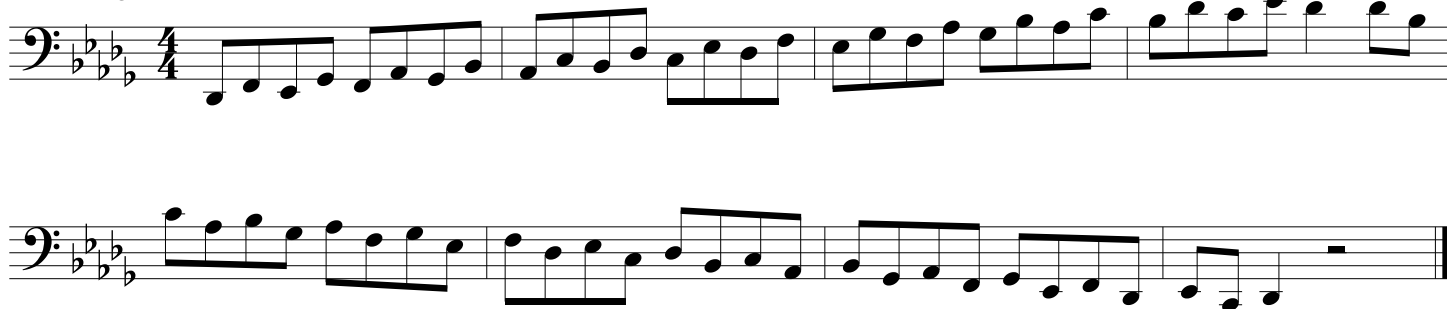
Relative Harmonic Minor Scale



One Octave Scale in Thirds



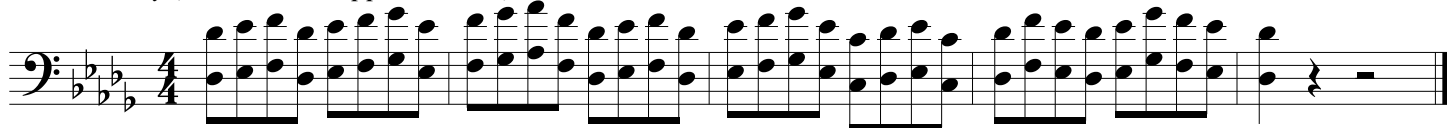
Full Range Scale in Thirds



Clarke Study (Lower Octave)



Clarke Study (Middle and Upper Octave)

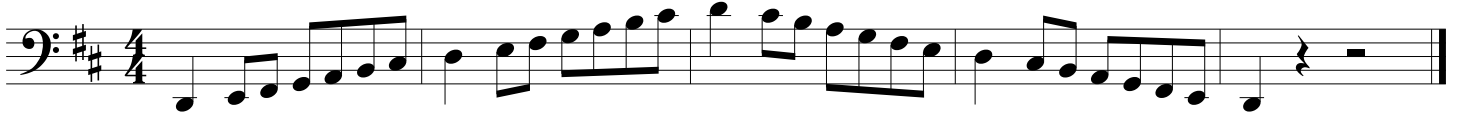


Bassoon

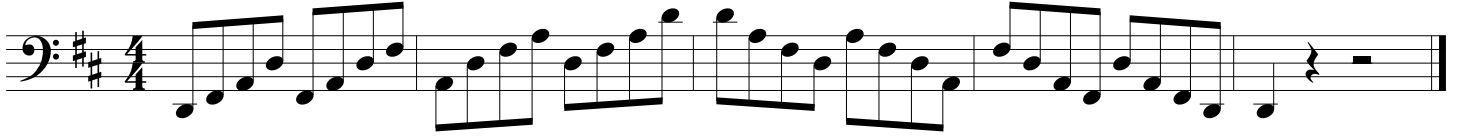
Key Study in D Concert

(D Major Scale)

Full Range Major Scale



Stair-Step Arpeggio



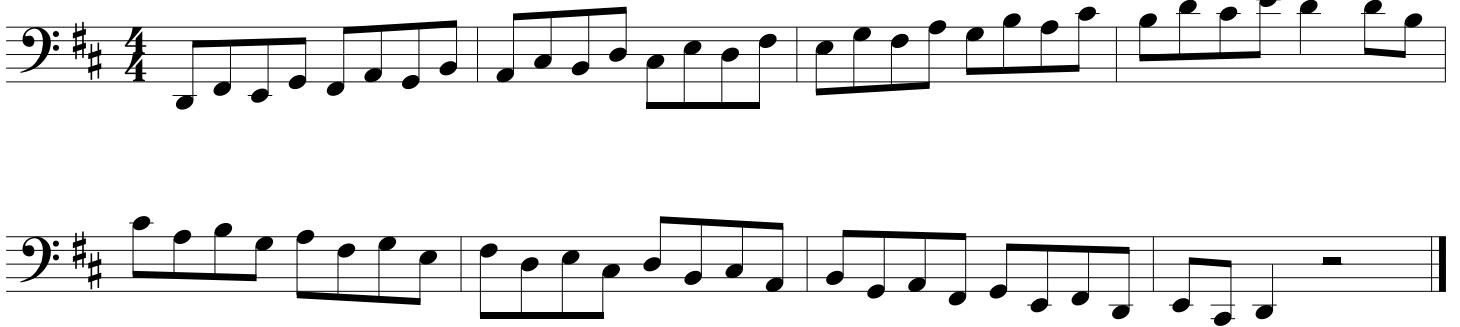
Relative Harmonic Minor Scale



One Octave Scale in Thirds



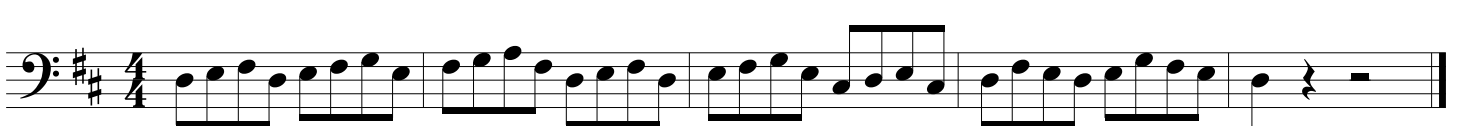
Full Range Scale in Thirds



Clarke Study (Lower Octave)



Clarke Study (Upper Octave)



Bassoon

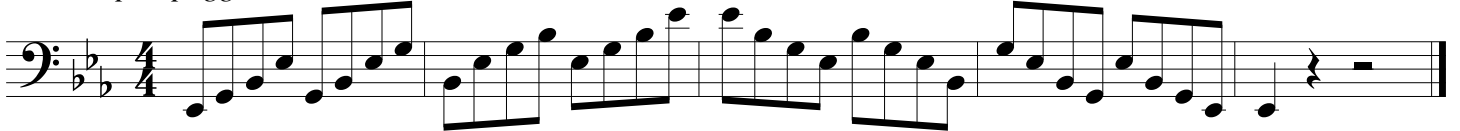
Key Study in Eb Concert

(Eb Major Scale)

Full Range Major Scale



Stair-Step Arpeggio



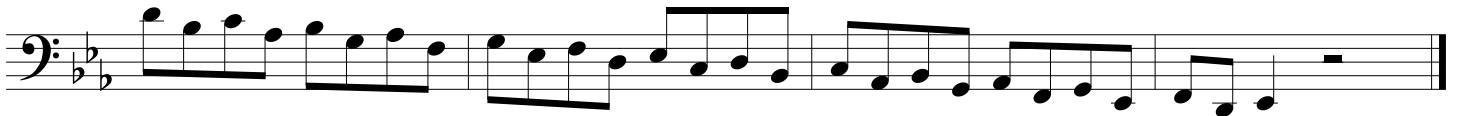
Relative Harmonic Minor Scale



One Octave Scale in Thirds



Full Range Scale in Thirds



Clarke Study (Lower Octave)



Clarke Study (Upper Octave)



Bassoon

Key Study in E Concert

(E Major Scale)

Full Range Major Scale

Musical notation for the Full Range Major Scale in E major, 4/4 time. The scale is written in the bass clef and spans from E2 to E4. It consists of a sequence of eighth notes: E2, F#2, G#2, A2, B2, C#3, D#3, E3, F#3, G#3, A3, B3, C#4, D#4, E4.

Stair-Step Arpeggio

Musical notation for the Stair-Step Arpeggio in E major, 4/4 time. The scale is written in the bass clef and spans from E2 to E4. It consists of a sequence of eighth notes: E2, F#2, G#2, A2, B2, C#3, D#3, E3, F#3, G#3, A3, B3, C#4, D#4, E4.

Relative Harmonic Minor Scale

Musical notation for the Relative Harmonic Minor Scale in E major, 4/4 time. The scale is written in the bass clef and spans from E2 to E4. It consists of a sequence of eighth notes: E2, F#2, G#2, A2, B2, C#3, D#3, E3, F#3, G#3, A3, B3, C#4, D#4, E4.

One Octave Scale in Thirds

Musical notation for the One Octave Scale in Thirds in E major, 4/4 time. The scale is written in the bass clef and spans from E2 to E4. It consists of a sequence of eighth notes: E2, F#2, G#2, A2, B2, C#3, D#3, E3, F#3, G#3, A3, B3, C#4, D#4, E4.

Full Range Scale in Thirds

Musical notation for the Full Range Scale in Thirds in E major, 4/4 time. The scale is written in the bass clef and spans from E2 to E4. It consists of a sequence of eighth notes: E2, F#2, G#2, A2, B2, C#3, D#3, E3, F#3, G#3, A3, B3, C#4, D#4, E4.

Musical notation for the Full Range Scale in Thirds in E major, 4/4 time. The scale is written in the bass clef and spans from E2 to E4. It consists of a sequence of eighth notes: E2, F#2, G#2, A2, B2, C#3, D#3, E3, F#3, G#3, A3, B3, C#4, D#4, E4.

Clarke Study (Lower Octave)

Musical notation for the Clarke Study (Lower Octave) in E major, 4/4 time. The scale is written in the bass clef and spans from E2 to E4. It consists of a sequence of eighth notes: E2, F#2, G#2, A2, B2, C#3, D#3, E3, F#3, G#3, A3, B3, C#4, D#4, E4.

Clarke Study (Upper Octave)

Musical notation for the Clarke Study (Upper Octave) in E major, 4/4 time. The scale is written in the bass clef and spans from E2 to E4. It consists of a sequence of eighth notes: E2, F#2, G#2, A2, B2, C#3, D#3, E3, F#3, G#3, A3, B3, C#4, D#4, E4.

Bassoon

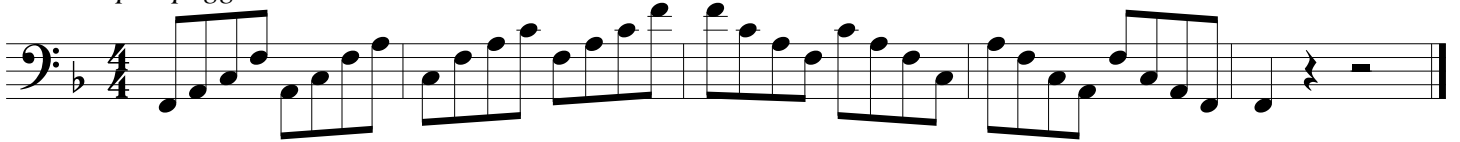
Key Study in F Concert

(F Major Scale)

Full Range Major Scale



Stair-Step Arpeggio



Relative Harmonic Minor Scale



One Octave Scale in Thirds



Full Range Scale in Thirds



Clarke Study (Lower Octave)



Clarke Study (Upper Octave)

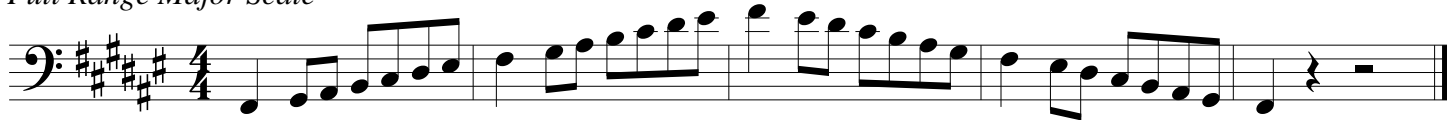


Bassoon

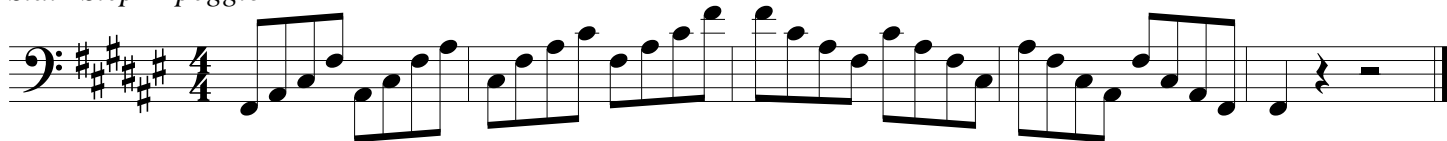
Key Study in F# Concert

(F# Major Scale)

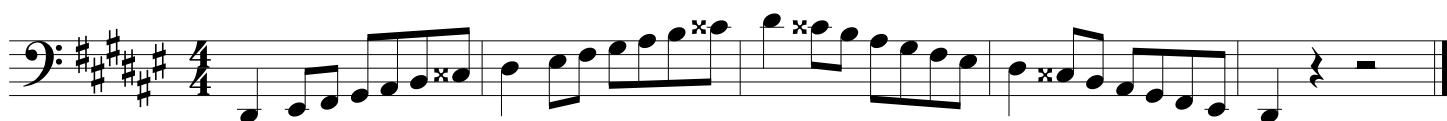
Full Range Major Scale



Stair-Step Arpeggio



Relative Harmonic Minor Scale



One Octave Scale in Thirds



Full Range Scale in Thirds



Clarke Study (Lower Octave)



Clarke Study (Upper Octave)



Bassoon

Key Study in Gb Concert

(Gb Major Scale)

Full Range Major Scale

Musical notation for the Full Range Major Scale in Gb major, 4/4 time. The scale is written in the bass clef and spans two octaves, starting on Gb and ending on Gb. The notation includes a key signature of two flats (Bb and Eb) and a 4/4 time signature. The scale is written as a single line of music with a double bar line at the end.

Stair-Step Arpeggio

Musical notation for the Stair-Step Arpeggio in Gb major, 4/4 time. The arpeggio is written in the bass clef and spans two octaves, starting on Gb and ending on Gb. The notation includes a key signature of two flats (Bb and Eb) and a 4/4 time signature. The arpeggio is written as a single line of music with a double bar line at the end.

Relative Harmonic Minor Scale

Musical notation for the Relative Harmonic Minor Scale in Gb major, 4/4 time. The scale is written in the bass clef and spans two octaves, starting on Gb and ending on Gb. The notation includes a key signature of two flats (Bb and Eb) and a 4/4 time signature. The scale is written as a single line of music with a double bar line at the end.

One Octave Scale in Thirds

Musical notation for the One Octave Scale in Thirds in Gb major, 4/4 time. The scale is written in the bass clef and spans one octave, starting on Gb and ending on Gb. The notation includes a key signature of two flats (Bb and Eb) and a 4/4 time signature. The scale is written as a single line of music with a double bar line at the end.

Full Range Scale in Thirds

Musical notation for the Full Range Scale in Thirds in Gb major, 4/4 time. The scale is written in the bass clef and spans two octaves, starting on Gb and ending on Gb. The notation includes a key signature of two flats (Bb and Eb) and a 4/4 time signature. The scale is written as a single line of music with a double bar line at the end.

Musical notation for the Full Range Scale in Thirds in Gb major, 4/4 time. This is a continuation of the previous block, showing the second octave of the scale. The notation includes a key signature of two flats (Bb and Eb) and a 4/4 time signature. The scale is written as a single line of music with a double bar line at the end.

Clarke Study (Lower Octave)

Musical notation for the Clarke Study (Lower Octave) in Gb major, 4/4 time. The study is written in the bass clef and spans one octave, starting on Gb and ending on Gb. The notation includes a key signature of two flats (Bb and Eb) and a 4/4 time signature. The study is written as a single line of music with a double bar line at the end.

Clarke Study (Upper Octave)

Musical notation for the Clarke Study (Upper Octave) in Gb major, 4/4 time. The study is written in the bass clef and spans one octave, starting on Gb and ending on Gb. The notation includes a key signature of two flats (Bb and Eb) and a 4/4 time signature. The study is written as a single line of music with a double bar line at the end.

Bassoon

Key Study in G Concert

(G Major Scale)

Full Range Major Scale



Stair-Step Arpeggio



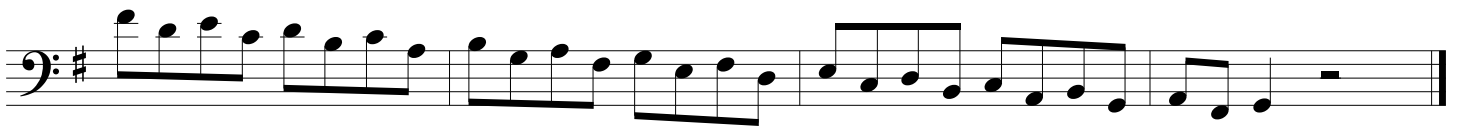
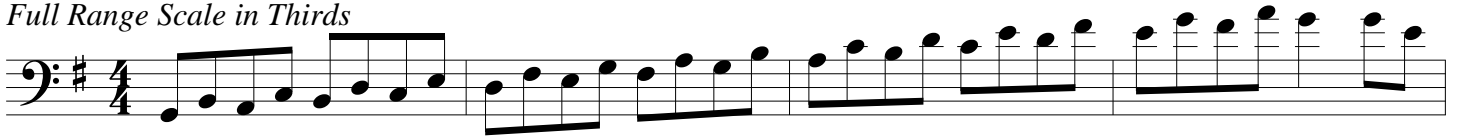
Relative Harmonic Minor Scale



One Octave Scale in Thirds



Full Range Scale in Thirds



Clarke Study (Lower Octave)



Clarke Study (Upper Octave)

