

Bass Trombone

Key Study in Ab Concert

(Ab Major Scale)

Full Range Major Scale

Musical notation for the Full Range Major Scale in Ab major, 4/4 time. The scale is written in the bass clef and spans from the lowest G (two ledger lines below the staff) to the highest G (two ledger lines above the staff). The notes are: G, Ab, Bb, C, D, Eb, F, G, Ab, Bb, C, D, Eb, F, G.

Stair-Step Arpeggio

Musical notation for the Stair-Step Arpeggio in Ab major, 4/4 time. The scale is written in the bass clef and spans from the lowest G to the highest G. The notes are: G, Ab, Bb, C, D, Eb, F, G, Ab, Bb, C, D, Eb, F, G.

Relative Harmonic Minor Scale

Musical notation for the Relative Harmonic Minor Scale in Ab major, 4/4 time. The scale is written in the bass clef and spans from the lowest G to the highest G. The notes are: G, Ab, Bb, C, D, Eb, F, G, Ab, Bb, C, D, Eb, F, G.

One Octave Scale in Thirds

Musical notation for the One Octave Scale in Thirds in Ab major, 4/4 time. The scale is written in the bass clef and spans from the lowest G to the highest G. The notes are: G, Ab, Bb, C, D, Eb, F, G, Ab, Bb, C, D, Eb, F, G.

Full Range Scale in Thirds

Musical notation for the Full Range Scale in Thirds in Ab major, 4/4 time. The scale is written in the bass clef and spans from the lowest G to the highest G. The notes are: G, Ab, Bb, C, D, Eb, F, G, Ab, Bb, C, D, Eb, F, G.

Musical notation for the Full Range Scale in Thirds in Ab major, 4/4 time. The scale is written in the bass clef and spans from the lowest G to the highest G. The notes are: G, Ab, Bb, C, D, Eb, F, G, Ab, Bb, C, D, Eb, F, G.

Clarke Study (Lower Octave)

Musical notation for the Clarke Study (Lower Octave) in Ab major, 4/4 time. The scale is written in the bass clef and spans from the lowest G to the highest G. The notes are: G, Ab, Bb, C, D, Eb, F, G, Ab, Bb, C, D, Eb, F, G.

Clarke Study (Upper Octave)

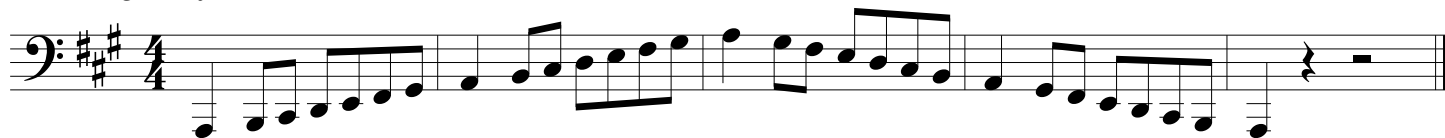
Musical notation for the Clarke Study (Upper Octave) in Ab major, 4/4 time. The scale is written in the bass clef and spans from the lowest G to the highest G. The notes are: G, Ab, Bb, C, D, Eb, F, G, Ab, Bb, C, D, Eb, F, G.

Bass Trombone

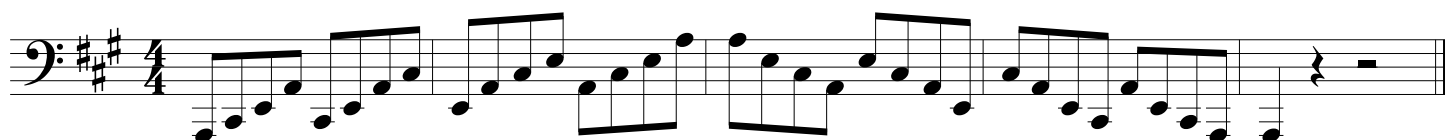
Key Study in A Concert

(A Major Scale)

Full Range Major Scale



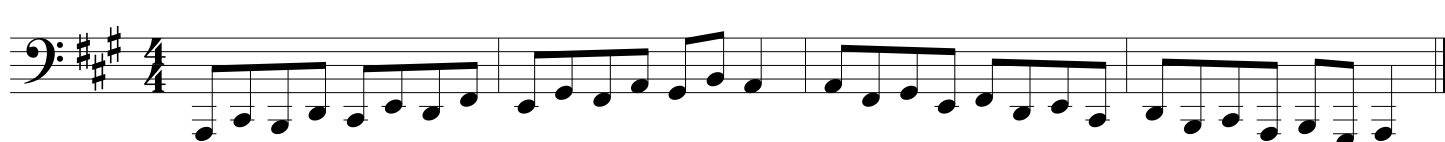
Stair-Step Arpeggio



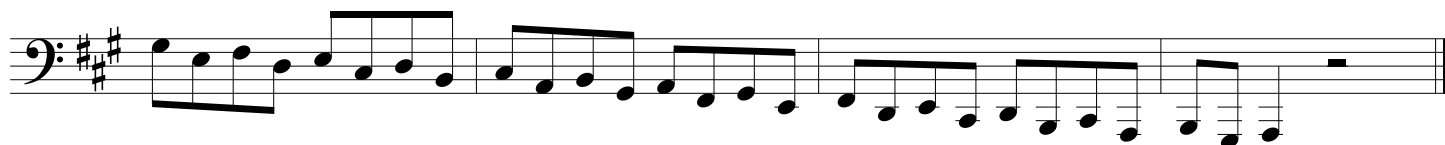
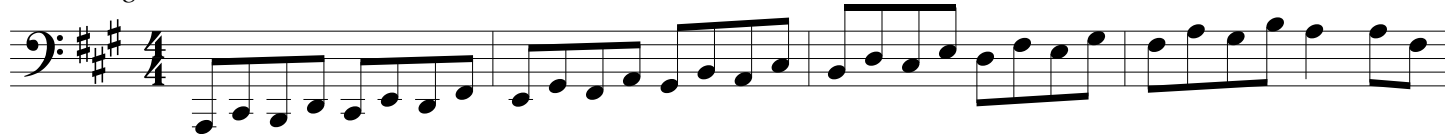
Relative Harmonic Minor Scale



One Octave Scale in Thirds



Full Range Scale in Thirds



Clarke Study (Lower Octave)



Clarke Study (Upper Octave)



Bass Trombone

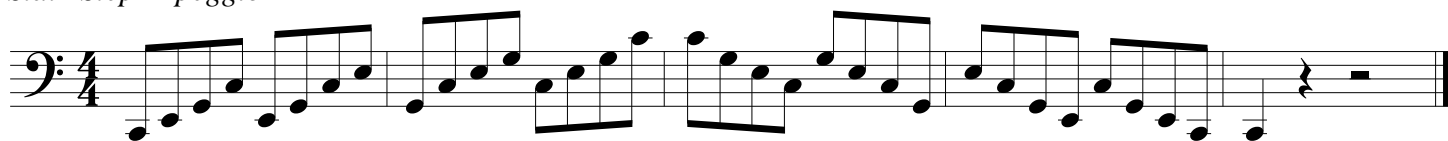
Key Study in C Concert

(C Major Scale)

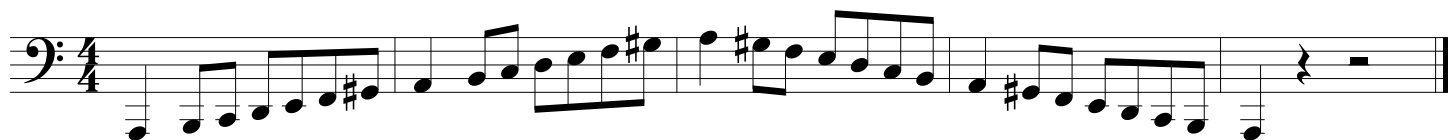
Full Range Major Scale



Stair-Step Arpeggio



Relative Harmonic Minor Scale



Full Range Scale in Thirds



Clarke Study (Lower Octave)



Clarke Study (Upper Octave)



Bass Trombone

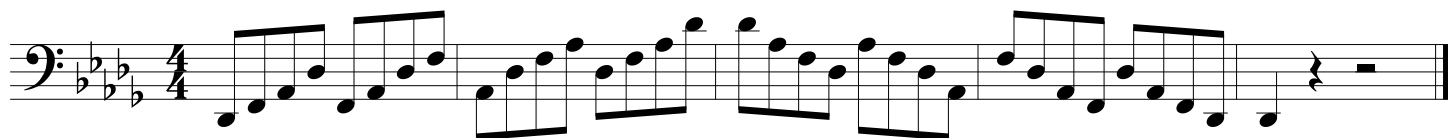
Key Study in Db Concert

(Db Major Scale)

Full Range Major Scale



Stair-Step Arpeggio



Relative Harmonic Minor Scale



Full Range Scale in Thirds



Clarke Study (Lower Octave)



Clarke Study (Upper Octave)



Bass Trombone

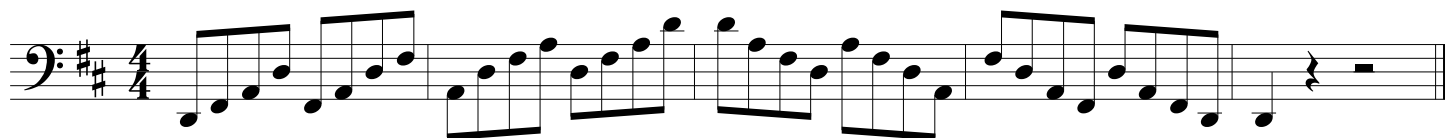
Key Study in D Concert

(D Major Scale)

Full Range Major Scale



Stair-Step Arpeggio



Relative Harmonic Minor Scale



Full Range Scale in Thirds



Clarke Study (Lower Octave)



Clarke Study (Upper Octave)



Bass Trombone

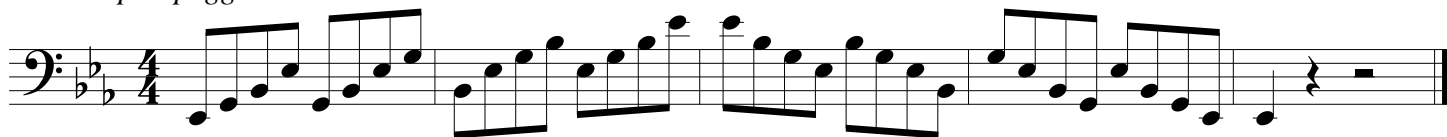
Key Study in Eb Concert

(Eb Major Scale)

Full Range Major Scale



Stair-Step Arpeggio



Relative Harmonic Minor Scale



Full Range Scale in Thirds



Clarke Study (Lower Octave)



Clarke Study (Upper Octave)



Bass Trombone

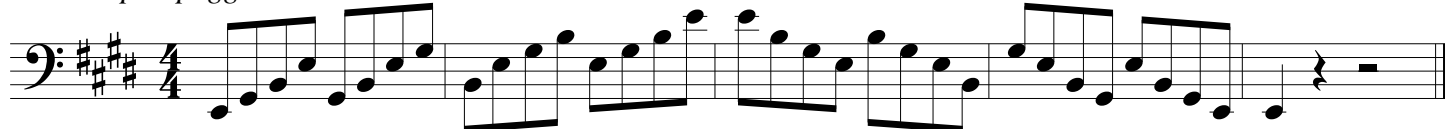
Key Study in E Concert

(E Major Scale)

Full Range Major Scale



Stair-Step Arpeggio



Relative Harmonic Minor Scale



One Octave Scale in Thirds



Clarke Study (Lower Octave)



Clarke Study (Upper Octave)

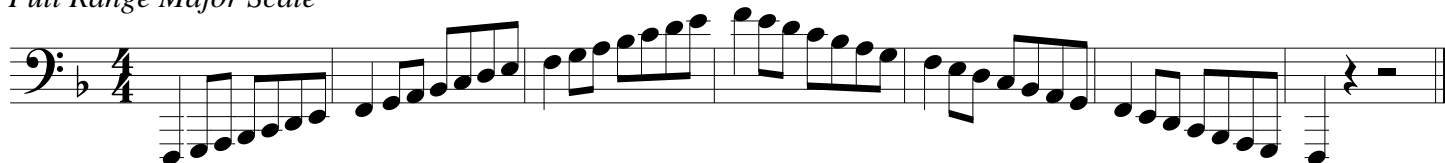


Bass Trombone

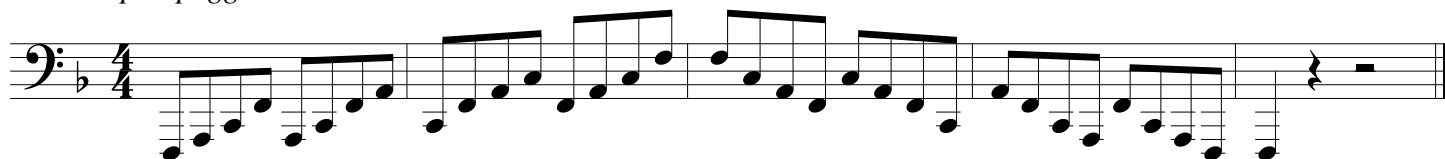
Key Study in F Concert

(F Major Scale)

Full Range Major Scale



Stair-Step Arpeggio



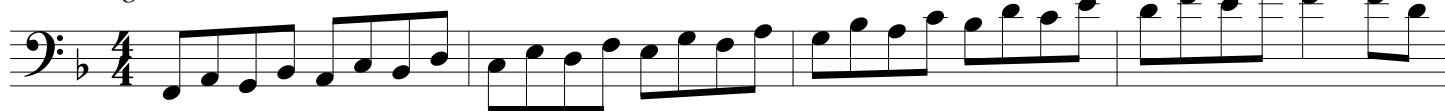
Relative Harmonic Minor Scale



One Octave Scale in Thirds



Full Range Scale in Thirds



Clarke Study (Lower Octave)



Clarke Study (Upper Octave)



Bass Trombone

Key Study in F# Concert

(F# Major Scale)

Full Range Major Scale

Musical notation for the Full Range Major Scale in F# major, 4/4 time. The scale is written in the bass clef and spans from the lowest note to the highest note of the instrument's range.

Stair-Step Arpeggio

Musical notation for the Stair-Step Arpeggio in F# major, 4/4 time. The exercise consists of a series of eighth-note chords moving in a stepwise fashion across the scale.

Relative Harmonic Minor Scale

Musical notation for the Relative Harmonic Minor Scale in F# major, 4/4 time. The scale is written in the bass clef and includes natural signs (x) over the 6th and 7th degrees of the scale.

One Octave Scale in Thirds

Musical notation for the One Octave Scale in Thirds in F# major, 4/4 time. The exercise consists of a series of eighth-note chords moving in a stepwise fashion across the scale.

Full Range Scale in Thirds

Musical notation for the Full Range Scale in Thirds in F# major, 4/4 time. The exercise consists of a series of eighth-note chords moving in a stepwise fashion across the scale.

Clarke Study (Lower Octave)

Musical notation for the Clarke Study (Lower Octave) in F# major, 4/4 time. The exercise consists of a series of eighth-note chords moving in a stepwise fashion across the scale.

Clarke Study (Middle and Upper Octave)

Musical notation for the Clarke Study (Middle and Upper Octave) in F# major, 4/4 time. The exercise consists of a series of eighth-note chords moving in a stepwise fashion across the scale.

Bass Trombone

Key Study in G Concert

(G Major Scale)

Full Range Major Scale

Musical notation for the Full Range Major Scale in G major, 4/4 time. The scale is written in bass clef and spans from G2 to G4. It consists of a single melodic line with a final quarter rest.

Stair-Step Arpeggio

Musical notation for the Stair-Step Arpeggio in G major, 4/4 time. The exercise is written in bass clef and consists of a series of eighth-note chords moving up and down the scale, starting from G2 and ending with a quarter rest.

Relative Harmonic Minor Scale

Musical notation for the Relative Harmonic Minor Scale in G major, 4/4 time. The scale is written in bass clef and spans from G2 to G4. It features a natural G4 and a sharp F4. It ends with a quarter rest.

One Octave Scale in Thirds

Musical notation for the One Octave Scale in Thirds in G major, 4/4 time. The exercise is written in bass clef and consists of eighth-note pairs moving up and down the scale from G2 to G3. It ends with a quarter rest.

Full Range Scale in Thirds

Musical notation for the Full Range Scale in Thirds in G major, 4/4 time. The exercise is written in bass clef and consists of eighth-note pairs moving up and down the scale from G2 to G4. It ends with a quarter rest.

Clarke Study (Lower Octave)

Musical notation for the Clarke Study (Lower Octave) in G major, 4/4 time. The exercise is written in bass clef and consists of eighth-note pairs moving up and down the scale from G2 to G3. It ends with a quarter rest.

Clarke Study (Middle and Upper Octave)

Musical notation for the Clarke Study (Middle and Upper Octave) in G major, 4/4 time. The exercise is written in bass clef and consists of eighth-note pairs moving up and down the scale from G3 to G4. It ends with a quarter rest.