

Bass Clarinet

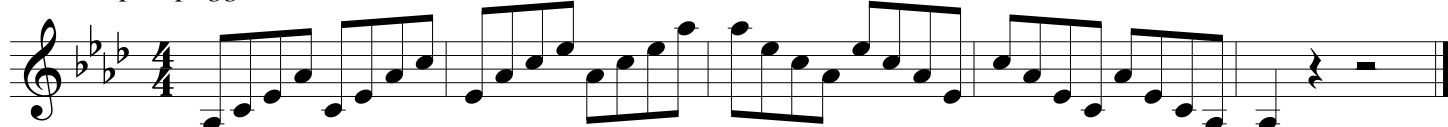
# Key Study in Gb Concert

(Ab Major Scale)

*Full Range Major Scale*



*Stair-Step Arpeggio*



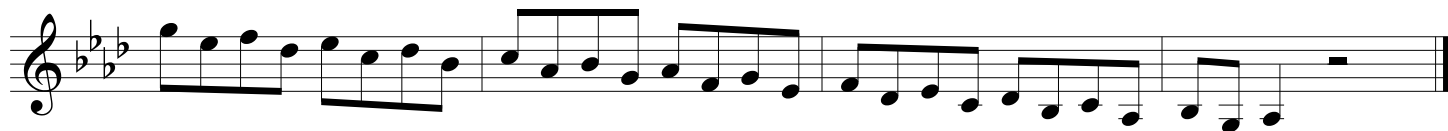
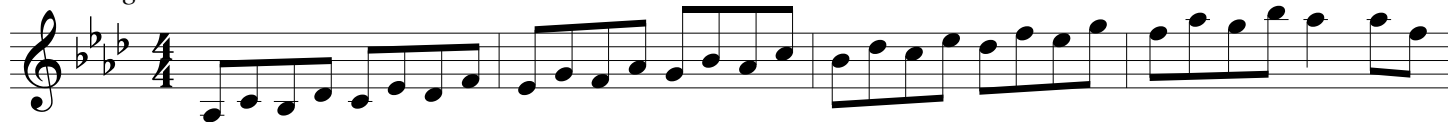
*Relative Harmonic Minor Scale*



*One Octave Scale in Thirds*



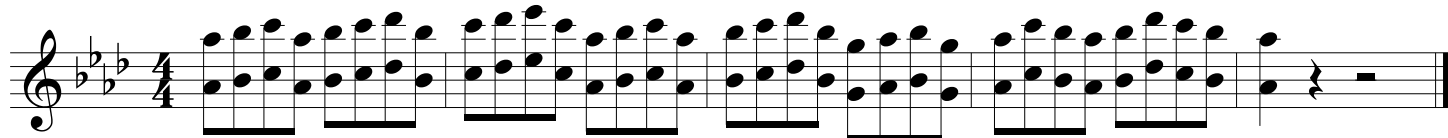
*Full Range Scale in Thirds*



*Clarke Study (Lower Octave)*



*Clarke Study (Middle and Upper Octave)*



**Bass Clarinet**

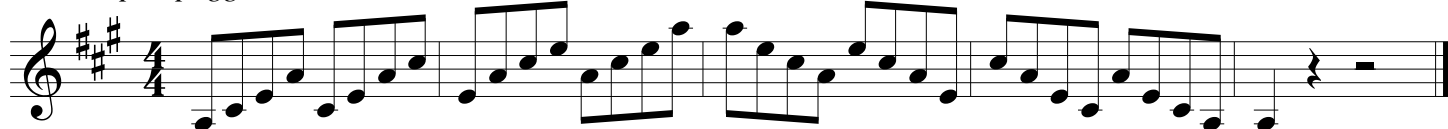
# Key Study in G Concert

(A Major Scale)

*Full Range Major Scale*



*Stair-Step Arpeggio*



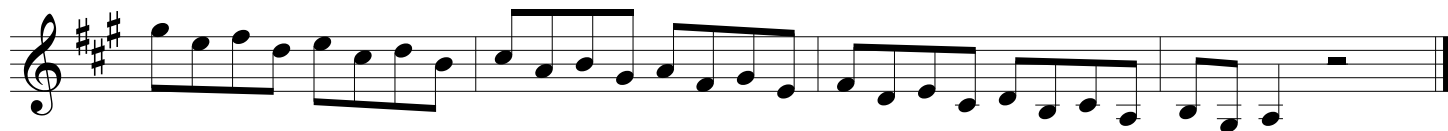
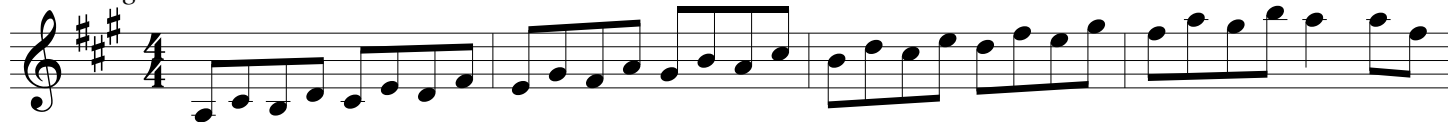
*Relative Harmonic Minor Scale*



*One Octave Scale in Thirds*



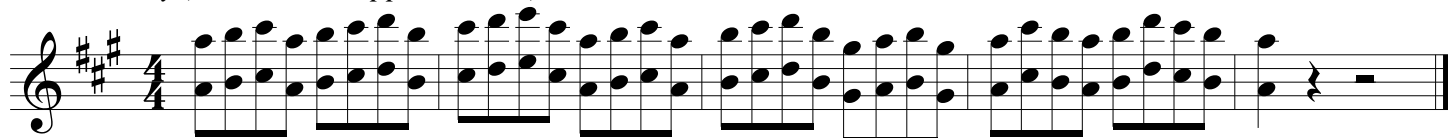
*Full Range Scale in Thirds*



*Clarke Study (Lower Octave)*



*Clarke Study (Middle and Upper Octave)*



Bass Clarinet

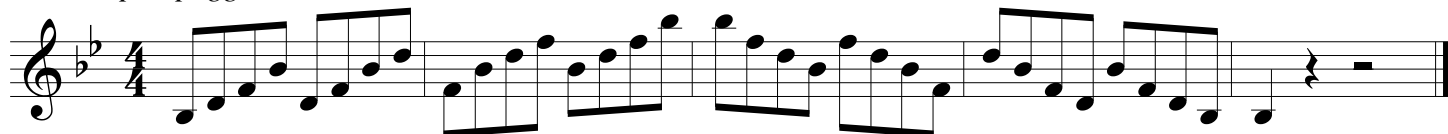
# Key Study in Ab Concert

(Bb Major Scale)

*Full Range Major Scale*



*Stair-Step Arpeggio*



*Relative Harmonic Minor Scale*



*One Octave Scale in Thirds*



*Full Range Scale in Thirds*



*Clarke Study (Lower Octave)*



*Clarke Study (Upper Octave)*



**Bass Clarinet**

# Key Study in A Concert

(B Major Scale)

*Full Range Major Scale*

Musical notation for the Full Range Major Scale in B major, 4/4 time. The scale is written on a single staff, starting on B4 and ending on B5. The key signature has two sharps (F# and C#). The notation includes a treble clef, a 4/4 time signature, and a final double bar line.

*Stair-Step Arpeggio*

Musical notation for the Stair-Step Arpeggio in B major, 4/4 time. The exercise is written on a single staff, starting on B4 and ending on B5. The key signature has two sharps (F# and C#). The notation includes a treble clef, a 4/4 time signature, and a final double bar line.

*Relative Harmonic Minor Scale*

Musical notation for the Relative Harmonic Minor Scale in B major, 4/4 time. The scale is written on a single staff, starting on B4 and ending on B5. The key signature has two sharps (F# and C#). The notation includes a treble clef, a 4/4 time signature, and a final double bar line. The notes are B, C, D, E, F, G, A, B, with natural signs under the F and A notes.

*One Octave Scale in Thirds*

Musical notation for the One Octave Scale in Thirds in B major, 4/4 time. The exercise is written on a single staff, starting on B4 and ending on B5. The key signature has two sharps (F# and C#). The notation includes a treble clef, a 4/4 time signature, and a final double bar line.

*Full Range Scale in Thirds*

Musical notation for the Full Range Scale in Thirds in B major, 4/4 time. The exercise is written on a single staff, starting on B4 and ending on B5. The key signature has two sharps (F# and C#). The notation includes a treble clef, a 4/4 time signature, and a final double bar line.

Musical notation for the Full Range Scale in Thirds in B major, 4/4 time. The exercise is written on a single staff, starting on B4 and ending on B5. The key signature has two sharps (F# and C#). The notation includes a treble clef, a 4/4 time signature, and a final double bar line.

*Clarke Study (Lower Octave)*

Musical notation for the Clarke Study (Lower Octave) in B major, 4/4 time. The exercise is written on a single staff, starting on B4 and ending on B5. The key signature has two sharps (F# and C#). The notation includes a treble clef, a 4/4 time signature, and a final double bar line.

*Clarke Study (Middle and Upper Octave)*

Musical notation for the Clarke Study (Middle and Upper Octave) in B major, 4/4 time. The exercise is written on a single staff, starting on B4 and ending on B5. The key signature has two sharps (F# and C#). The notation includes a treble clef, a 4/4 time signature, and a final double bar line.

Bass Clarinet

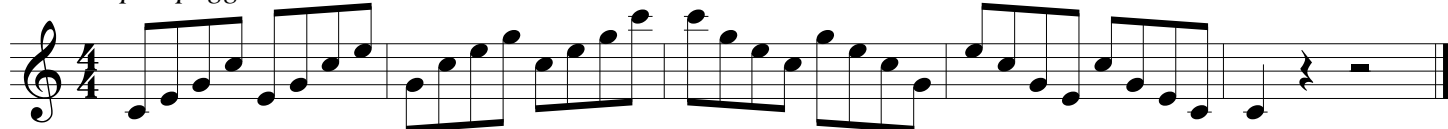
# Key Study in Bb Concert

(C Major Scale)

*Full Range Major Scale*



*Stair-Step Arpeggio*



*Relative Harmonic Minor Scale*



*One Octave Scale in Thirds*



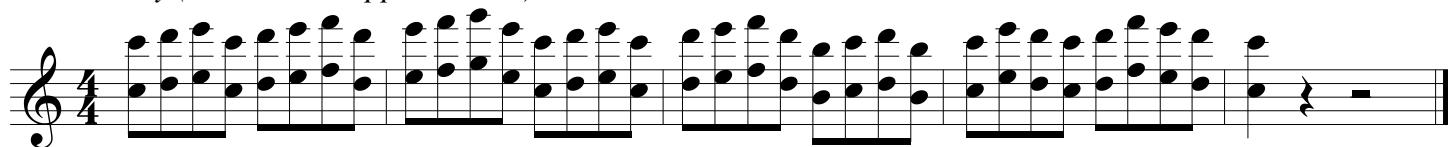
*Full Range Scale in Thirds*



*Clarke Study (Lower Octave)*



*Clarke Study (Middle and Upper Octave)*



Bass Clarinet

# Key Study in B Concert

(C# Major Scale)

*Full Range Major Scale*

Musical notation for the Full Range Major Scale in C# major, 4/4 time. The scale is written on a single staff, starting on C#4 and ending on C#5. The notes are: C#4, D4, E4, F#4, G4, A4, B4, C#5. The notation includes a treble clef, a key signature of two sharps (F# and C#), and a 4/4 time signature.

*Stair-Step Arpeggio*

Musical notation for the Stair-Step Arpeggio in C# major, 4/4 time. The scale is written on a single staff, starting on C#4 and ending on C#5. The notes are: C#4, D4, E4, F#4, G4, A4, B4, C#5. The notation includes a treble clef, a key signature of two sharps (F# and C#), and a 4/4 time signature.

*Relative Harmonic Minor Scale*

Musical notation for the Relative Harmonic Minor Scale in C# major, 4/4 time. The scale is written on a single staff, starting on C#4 and ending on C#5. The notes are: C#4, D4, E4, F#4, G4, A4, B4, C#5. The notation includes a treble clef, a key signature of two sharps (F# and C#), and a 4/4 time signature.

*One Octave Scale in Thirds*

Musical notation for the One Octave Scale in Thirds in C# major, 4/4 time. The scale is written on a single staff, starting on C#4 and ending on C#5. The notes are: C#4, D4, E4, F#4, G4, A4, B4, C#5. The notation includes a treble clef, a key signature of two sharps (F# and C#), and a 4/4 time signature.

*Full Range Scale in Thirds*

Musical notation for the Full Range Scale in Thirds in C# major, 4/4 time. The scale is written on a single staff, starting on C#4 and ending on C#5. The notes are: C#4, D4, E4, F#4, G4, A4, B4, C#5. The notation includes a treble clef, a key signature of two sharps (F# and C#), and a 4/4 time signature.

Musical notation for the Full Range Scale in Thirds in C# major, 4/4 time. The scale is written on a single staff, starting on C#4 and ending on C#5. The notes are: C#4, D4, E4, F#4, G4, A4, B4, C#5. The notation includes a treble clef, a key signature of two sharps (F# and C#), and a 4/4 time signature.

*Clarke Study (Lower Octave)*

Musical notation for the Clarke Study (Lower Octave) in C# major, 4/4 time. The scale is written on a single staff, starting on C#4 and ending on C#5. The notes are: C#4, D4, E4, F#4, G4, A4, B4, C#5. The notation includes a treble clef, a key signature of two sharps (F# and C#), and a 4/4 time signature.

*Clarke Study (Upper Octave)*

Musical notation for the Clarke Study (Upper Octave) in C# major, 4/4 time. The scale is written on a single staff, starting on C#4 and ending on C#5. The notes are: C#4, D4, E4, F#4, G4, A4, B4, C#5. The notation includes a treble clef, a key signature of two sharps (F# and C#), and a 4/4 time signature.

Bass Clarinet

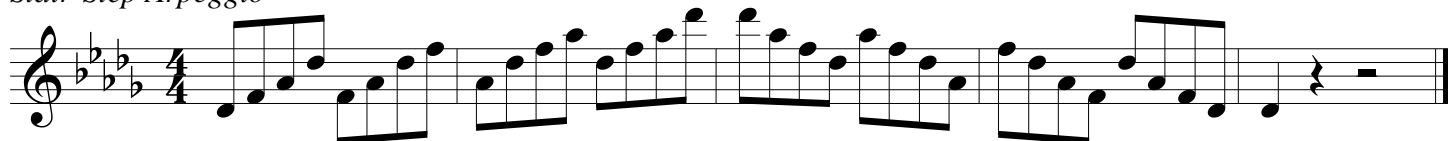
# Key Study in Cb Concert

(Db Major Scale)

*Full Range Major Scale*



*Stair-Step Arpeggio*



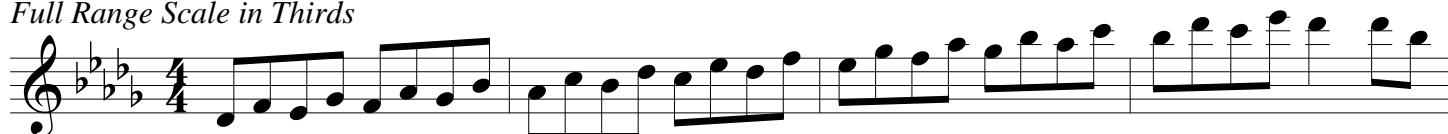
*Relative Harmonic Minor Scale*



*One Octave Scale in Thirds*



*Full Range Scale in Thirds*



*Clarke Study (Lower Octave)*



*Clarke Study (Upper Octave)*



Bass Clarinet

# Key Study in C Concert

(D Major Scale)

*Full Range Major Scale*

Musical notation for the Full Range Major Scale in D major, 4/4 time. The scale is written on a single staff, starting on D4 and ending on D5. The notes are: D4, E4, F#4, G4, A4, B4, C5, D5. The piece concludes with a quarter rest followed by a double bar line.

*Stair-Step Arpeggio*

Musical notation for the Stair-Step Arpeggio in D major, 4/4 time. The piece consists of two measures of eighth-note arpeggios: D4-E4-F#4-G4, A4-B4-C5-D5, and D5-C5-B4-A4, G4-F#4-E4-D4. The piece concludes with a quarter rest followed by a double bar line.

*Relative Harmonic Minor Scale*

Musical notation for the Relative Harmonic Minor Scale in D major, 4/4 time. The scale is written on a single staff, starting on D4 and ending on D5. The notes are: D4, E4, F#4, G4, A4, B4, C#5, D5. The piece concludes with a quarter rest followed by a double bar line.

*One Octave Scale in Thirds*

Musical notation for the One Octave Scale in Thirds in D major, 4/4 time. The piece consists of two measures of eighth-note pairs: D4-E4, F#4-G4, A4-B4, C5-D5, and D5-C5, B4-A4, G4-F#4, E4-D4. The piece concludes with a quarter rest followed by a double bar line.

*Full Range Scale in Thirds*

Musical notation for the Full Range Scale in Thirds in D major, 4/4 time. The piece consists of two measures of eighth-note pairs: D4-E4, F#4-G4, A4-B4, C5-D5, and D5-C5, B4-A4, G4-F#4, E4-D4. The piece concludes with a quarter rest followed by a double bar line.

Musical notation for the Full Range Scale in Thirds in D major, 4/4 time. The piece consists of two measures of eighth-note pairs: D4-E4, F#4-G4, A4-B4, C5-D5, and D5-C5, B4-A4, G4-F#4, E4-D4. The piece concludes with a quarter rest followed by a double bar line.

*Clarke Study (Lower Octave)*

Musical notation for the Clarke Study (Lower Octave) in D major, 4/4 time. The piece consists of two measures of eighth-note pairs: D4-E4, F#4-G4, A4-B4, C5-D5, and D5-C5, B4-A4, G4-F#4, E4-D4. The piece concludes with a quarter rest followed by a double bar line.

*Clarke Study (Upper Octave)*

Musical notation for the Clarke Study (Upper Octave) in D major, 4/4 time. The piece consists of two measures of eighth-note pairs: D4-E4, F#4-G4, A4-B4, C5-D5, and D5-C5, B4-A4, G4-F#4, E4-D4. The piece concludes with a quarter rest followed by a double bar line.



**Bass Clarinet**

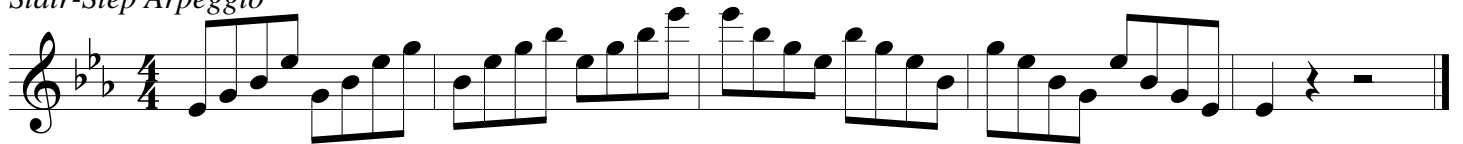
# Key Study in Db Concert

(Eb Major Scale)

*Full Range Major Scale*



*Stair-Step Arpeggio*



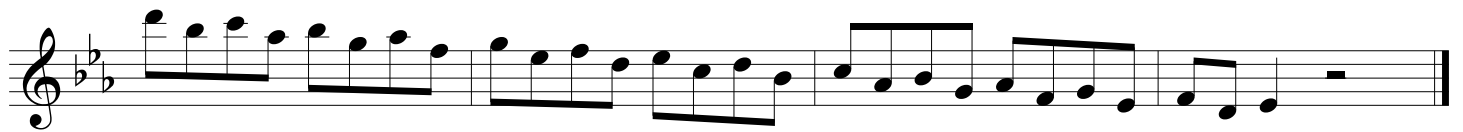
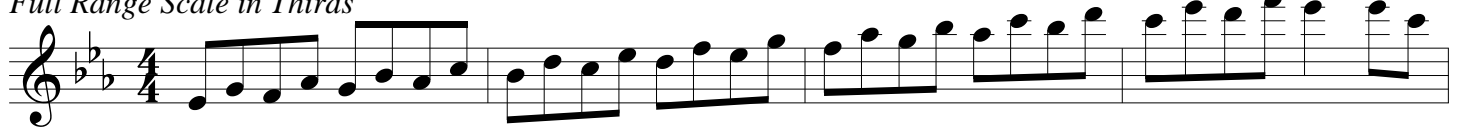
*Relative Harmonic Minor Scale*



*One Octave Scale in Thirds*



*Full Range Scale in Thirds*



*Clarke Study (Lower Octave)*



*Clarke Study (Upper Octave)*



Bass Clarinet

# Key Study in D Concert

(E Major Scale)

*Full Range Major Scale*



*Stair-Step Arpeggio*



*Relative Harmonic Minor Scale*



*One Octave Scale in Thirds*



*Full Range Scale in Thirds*



*Clarke Study (Lower Octave)*



*Clarke Study (Upper Octave)*



**Bass Clarinet**

# Key Study in Eb Concert

(F Major Scale)

*Full Range Major Scale*

Musical notation for the Full Range Major Scale in F major, 4/4 time. The scale is written on a single staff, starting on F4 and ending on F5. It consists of two ascending and two descending lines of eighth notes.

*Stair-Step Arpeggio*

Musical notation for the Stair-Step Arpeggio in F major, 4/4 time. The exercise is written on a single staff, starting on F4 and ending on F5. It consists of two ascending and two descending lines of eighth notes, with each note being an arpeggiated chord.

*Relative Harmonic Minor Scale*

Musical notation for the Relative Harmonic Minor Scale in F major, 4/4 time. The scale is written on a single staff, starting on F4 and ending on F5. It consists of two ascending and two descending lines of eighth notes, with the natural notes of the F major scale and the raised notes of the harmonic minor scale.

*One Octave Scale in Thirds*

Musical notation for the One Octave Scale in Thirds in F major, 4/4 time. The exercise is written on a single staff, starting on F4 and ending on F5. It consists of two ascending and two descending lines of eighth notes, with each note being a pair of notes in thirds.

*Full Range Scale in Thirds*

Musical notation for the Full Range Scale in Thirds in F major, 4/4 time. The exercise is written on two staves, starting on F4 and ending on F5. It consists of two ascending and two descending lines of eighth notes, with each note being a pair of notes in thirds.

*Clarke Study (Lower Octave)*

Musical notation for the Clarke Study (Lower Octave) in F major, 4/4 time. The exercise is written on a single staff, starting on F4 and ending on F5. It consists of two ascending and two descending lines of eighth notes, with each note being a pair of notes in thirds.

*Clarke Study (Middle and Upper Octave)*

Musical notation for the Clarke Study (Middle and Upper Octave) in F major, 4/4 time. The exercise is written on a single staff, starting on F4 and ending on F5. It consists of two ascending and two descending lines of eighth notes, with each note being a pair of notes in thirds.

Bass Clarinet

# Key Study in E Concert

(F# Major Scale)

*Full Range Major Scale*

Musical notation for the Full Range Major Scale in E Concert (F# Major) for Bass Clarinet. The piece is in 4/4 time and consists of a single staff with a treble clef. The key signature has five sharps (F#, C#, G#, D#, A#). The scale is played across two octaves, starting on the middle C (C4) and ending on the C above (C5). The notation includes slurs and accents to indicate phrasing and dynamics.

*Stair-Step Arpeggio*

Musical notation for the Stair-Step Arpeggio in E Concert (F# Major) for Bass Clarinet. The piece is in 4/4 time and consists of a single staff with a treble clef. The key signature has five sharps (F#, C#, G#, D#, A#). The arpeggio is played across two octaves, starting on the middle C (C4) and ending on the C above (C5). The notation includes slurs and accents to indicate phrasing and dynamics.

*Relative Harmonic Minor Scale*

Musical notation for the Relative Harmonic Minor Scale in E Concert (F# Major) for Bass Clarinet. The piece is in 4/4 time and consists of a single staff with a treble clef. The key signature has five sharps (F#, C#, G#, D#, A#). The scale is played across two octaves, starting on the middle C (C4) and ending on the C above (C5). The notation includes slurs and accents to indicate phrasing and dynamics.

*One Octave Scale in Thirds*

Musical notation for the One Octave Scale in Thirds in E Concert (F# Major) for Bass Clarinet. The piece is in 4/4 time and consists of a single staff with a treble clef. The key signature has five sharps (F#, C#, G#, D#, A#). The scale is played across one octave, starting on the middle C (C4) and ending on the C above (C5). The notation includes slurs and accents to indicate phrasing and dynamics.

*Full Range Scale in Thirds*

Musical notation for the Full Range Scale in Thirds in E Concert (F# Major) for Bass Clarinet. The piece is in 4/4 time and consists of a single staff with a treble clef. The key signature has five sharps (F#, C#, G#, D#, A#). The scale is played across two octaves, starting on the middle C (C4) and ending on the C above (C5). The notation includes slurs and accents to indicate phrasing and dynamics.

Musical notation for the Full Range Scale in Thirds in E Concert (F# Major) for Bass Clarinet. The piece is in 4/4 time and consists of a single staff with a treble clef. The key signature has five sharps (F#, C#, G#, D#, A#). The scale is played across two octaves, starting on the middle C (C4) and ending on the C above (C5). The notation includes slurs and accents to indicate phrasing and dynamics.

*Clarke Study (Lower Octave)*

Musical notation for the Clarke Study (Lower Octave) in E Concert (F# Major) for Bass Clarinet. The piece is in 4/4 time and consists of a single staff with a treble clef. The key signature has five sharps (F#, C#, G#, D#, A#). The study is played across one octave, starting on the middle C (C4) and ending on the C above (C5). The notation includes slurs and accents to indicate phrasing and dynamics.

*Clarke Study (Middle and Upper Octave)*

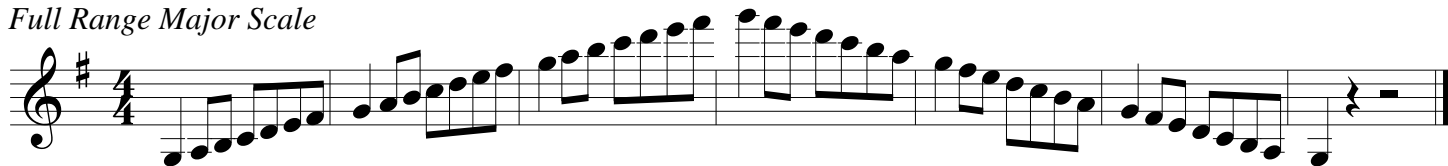
Musical notation for the Clarke Study (Middle and Upper Octave) in E Concert (F# Major) for Bass Clarinet. The piece is in 4/4 time and consists of a single staff with a treble clef. The key signature has five sharps (F#, C#, G#, D#, A#). The study is played across two octaves, starting on the middle C (C4) and ending on the C above (C5). The notation includes slurs and accents to indicate phrasing and dynamics.

Bass Clarinet

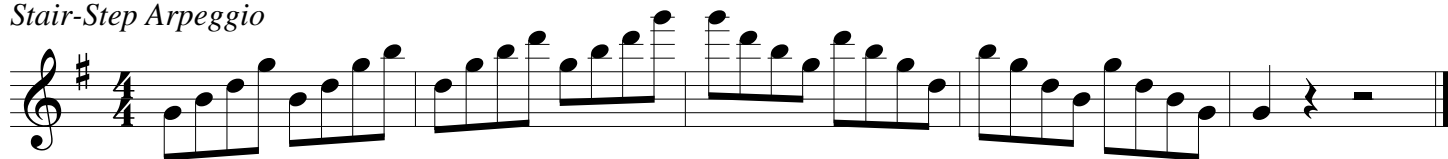
# Key Study in F Concert

(G Major Scale)

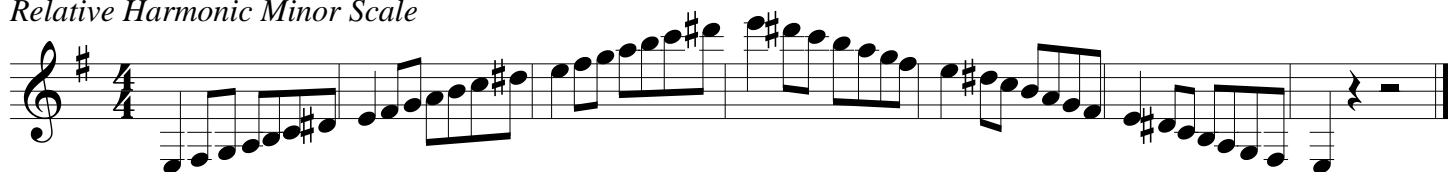
*Full Range Major Scale*



*Stair-Step Arpeggio*



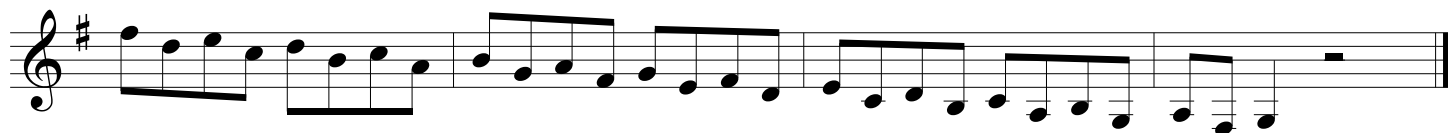
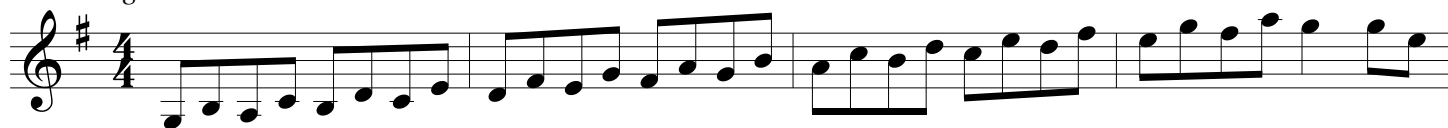
*Relative Harmonic Minor Scale*



*One Octave Scale in Thirds*



*Full Range Scale in Thirds*



*Clarke Study (Lower Octave)*



*Clarke Study (Middle and Upper Octave)*

